

# INCLASS



## FINISHES BOOK

Fabrics / Leathers / Materials

INCLASS

We consider the colours and materials as means to express ideas and create emotions as they have the capacity to influence our feelings, perceptions and wellness.

This sample book wants to serve as a tool to inspire, communicate and reproduce colours, helping the end user to make their colour ideas come true based on our suggestions.

COLOURS CAN DEFINE  
OUR WORLD AND  
CONNECT US WITH THE  
ENVIRONMENT.

COLOURS & FINISHES

ESSENTIAL ELEMENTS  
TO EXPRESS A MESSAGE  
AND CREATE AN  
ENVIRONMENT.

The extense INCLASS finishes book offers a broad range of materials, finishes and colours.

The infinite combinations of materials, colours and textures allow to effectively express the message, the intention and the desired atmosphere for each project.





INCLASS

# INDEX

1. SUGGESTIONS OF COMBINATIONS 664

2. FINISHES 686

Upholstery

Mesh

Metal Paint

Wood

Polypropylene

Rotomolded polyethylene

Table tops

3. CARE AND MAINTENANCE 790



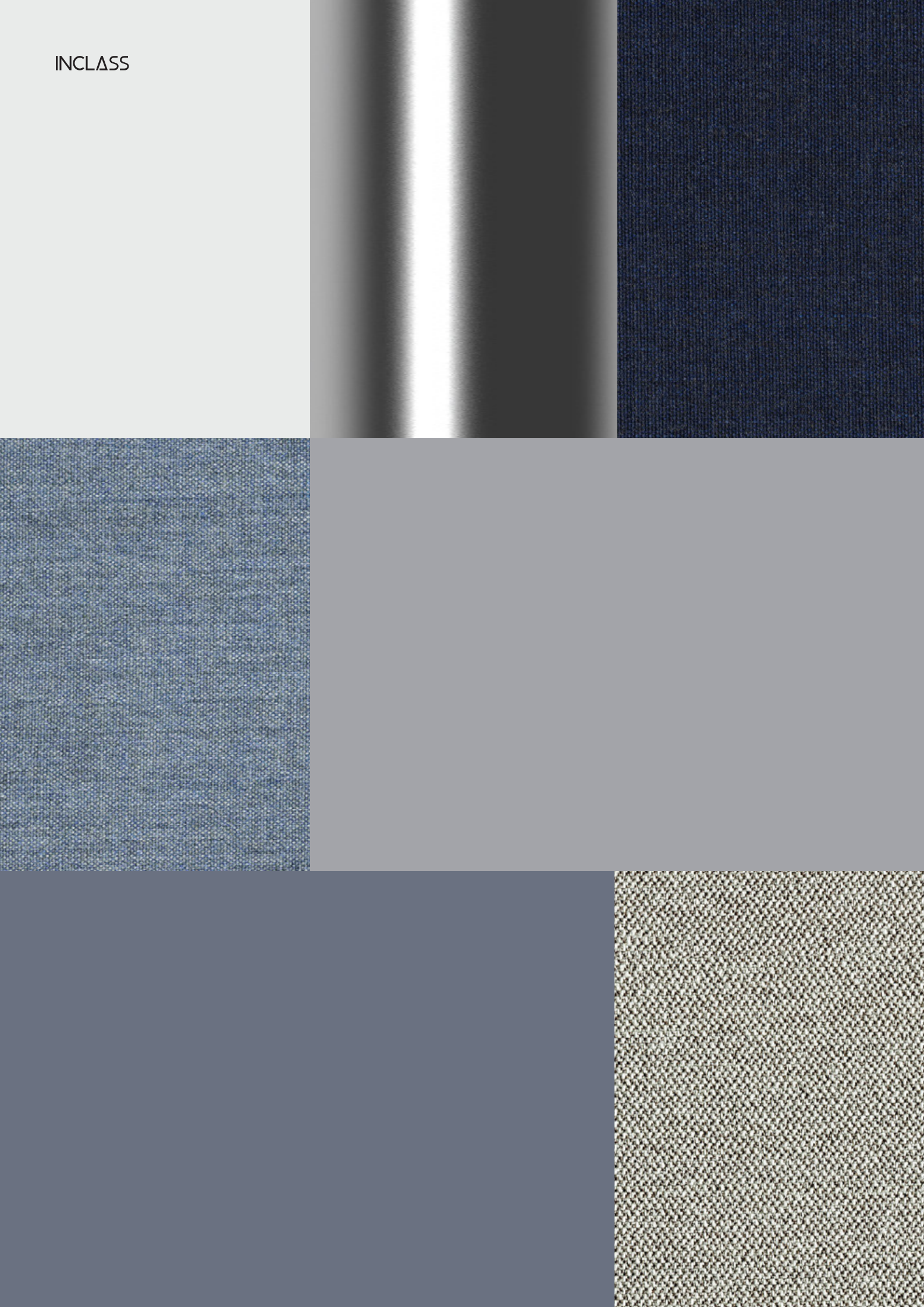


664/665

# SUGGESTIONS OF COMBINATIONS

URBAN, SIENA, NATURAL, EARTH, CASUAL

INCLASS



## URBAN

Elegant, modern, relaxed  
or dynamic atmosphere.  
Positive attitude, feeling of  
calm and security.



INCLASS



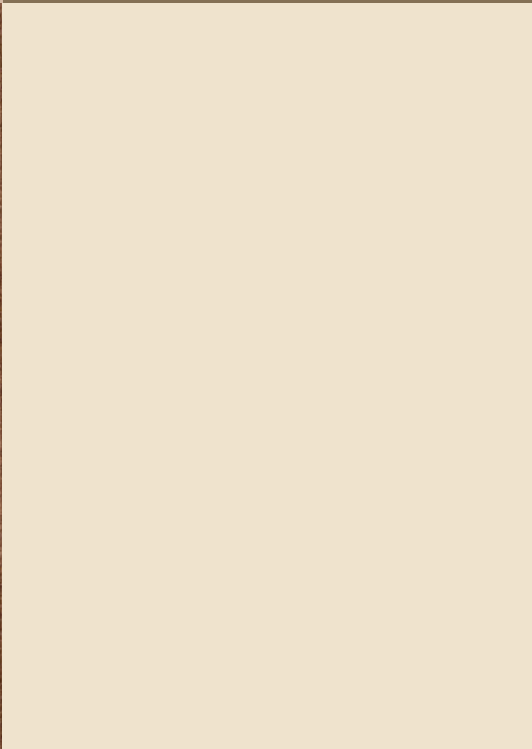
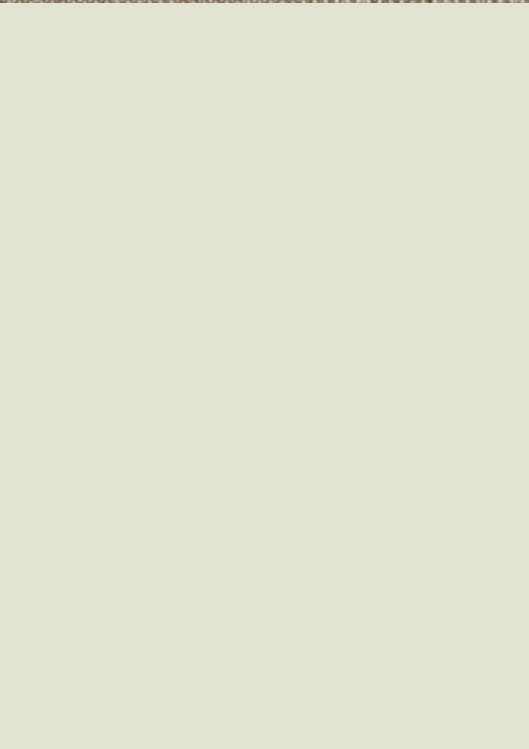
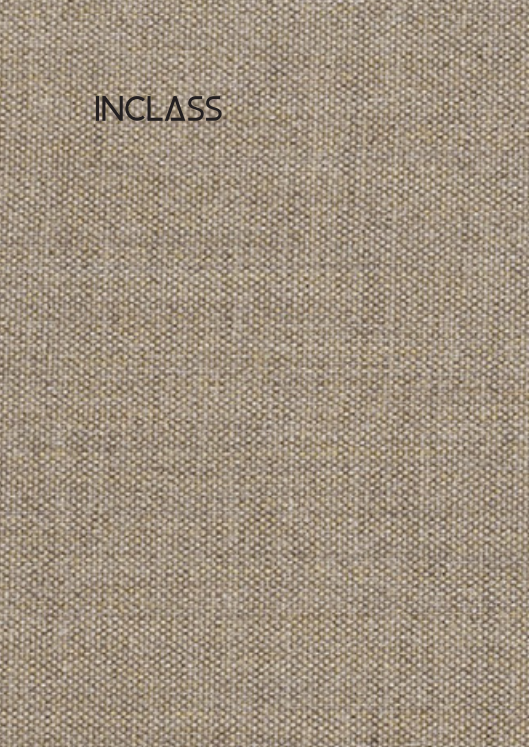


669/669





INCLASS



SIENA

Raw, velvety and intense tones that embellish and fill the space with subtle elegance.



INCLASS





672/673

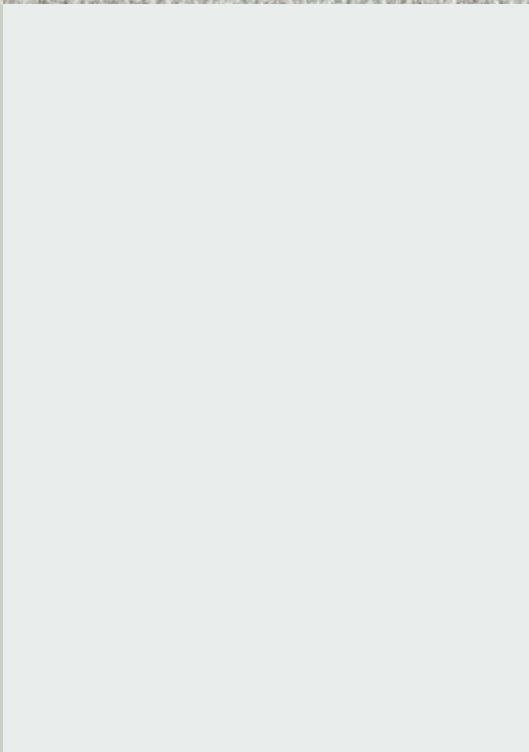
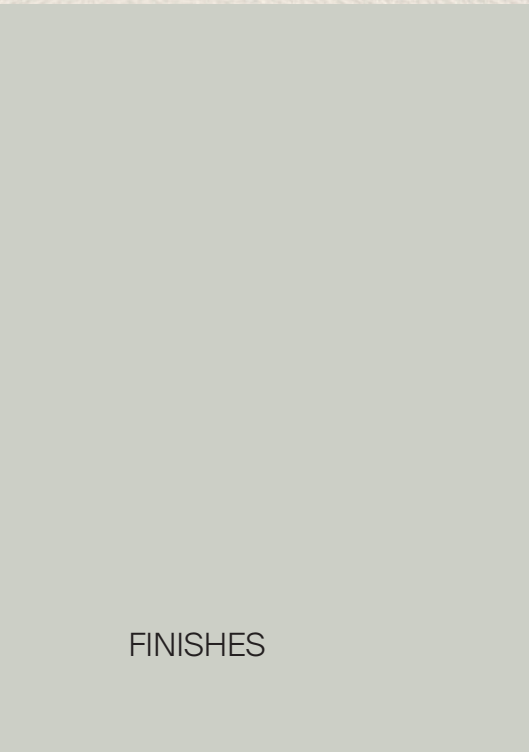




NATURAL

Refined, natural and ecological with a slightly warm nuance that transmits peace and tranquility.

674/675





INCLASS





676/677



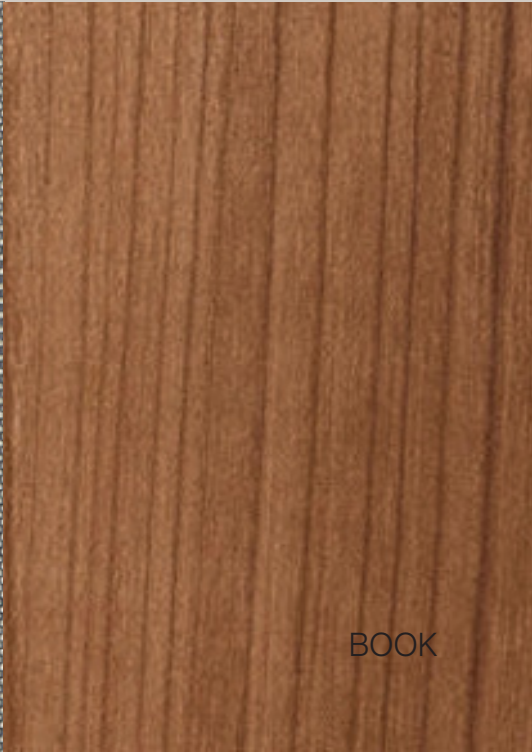
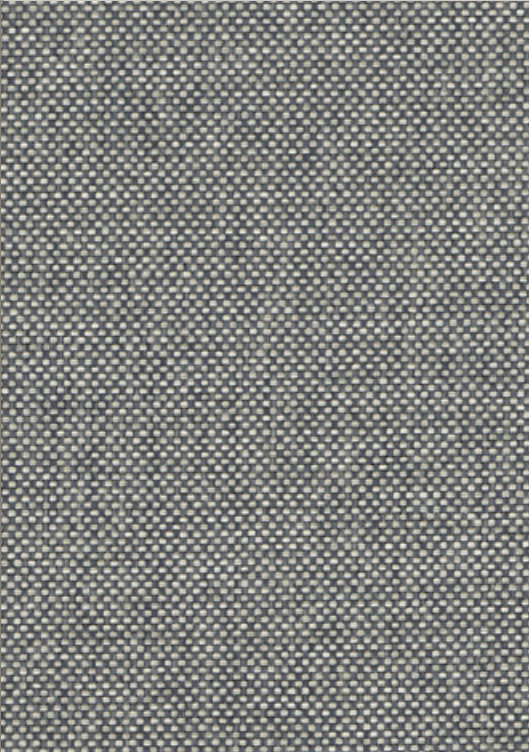
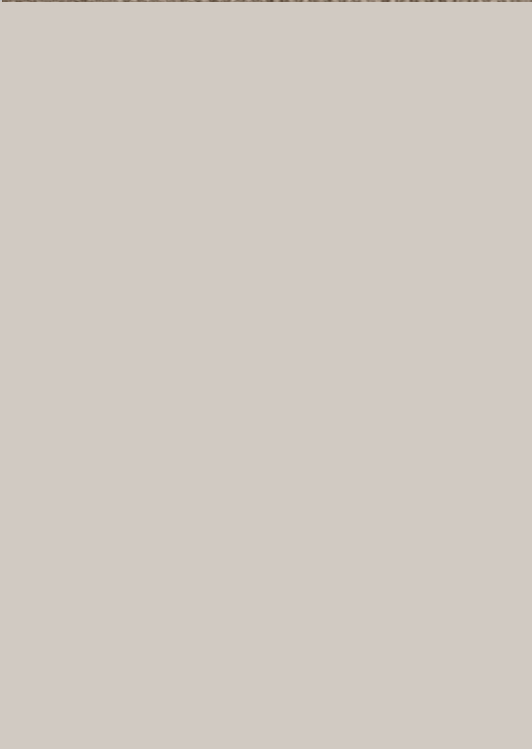
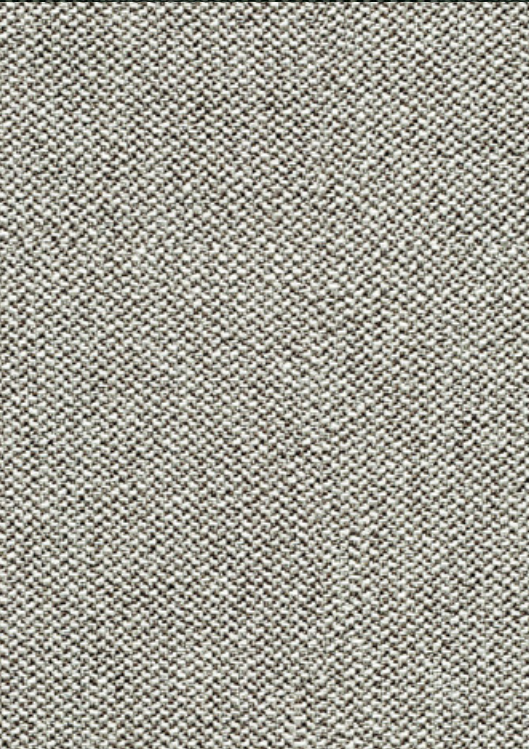
FINISHES

BOOK



EARTH

Connection with nature,  
holistic and harmonious  
lifestyle. Sober, cosy and  
timeless colours.



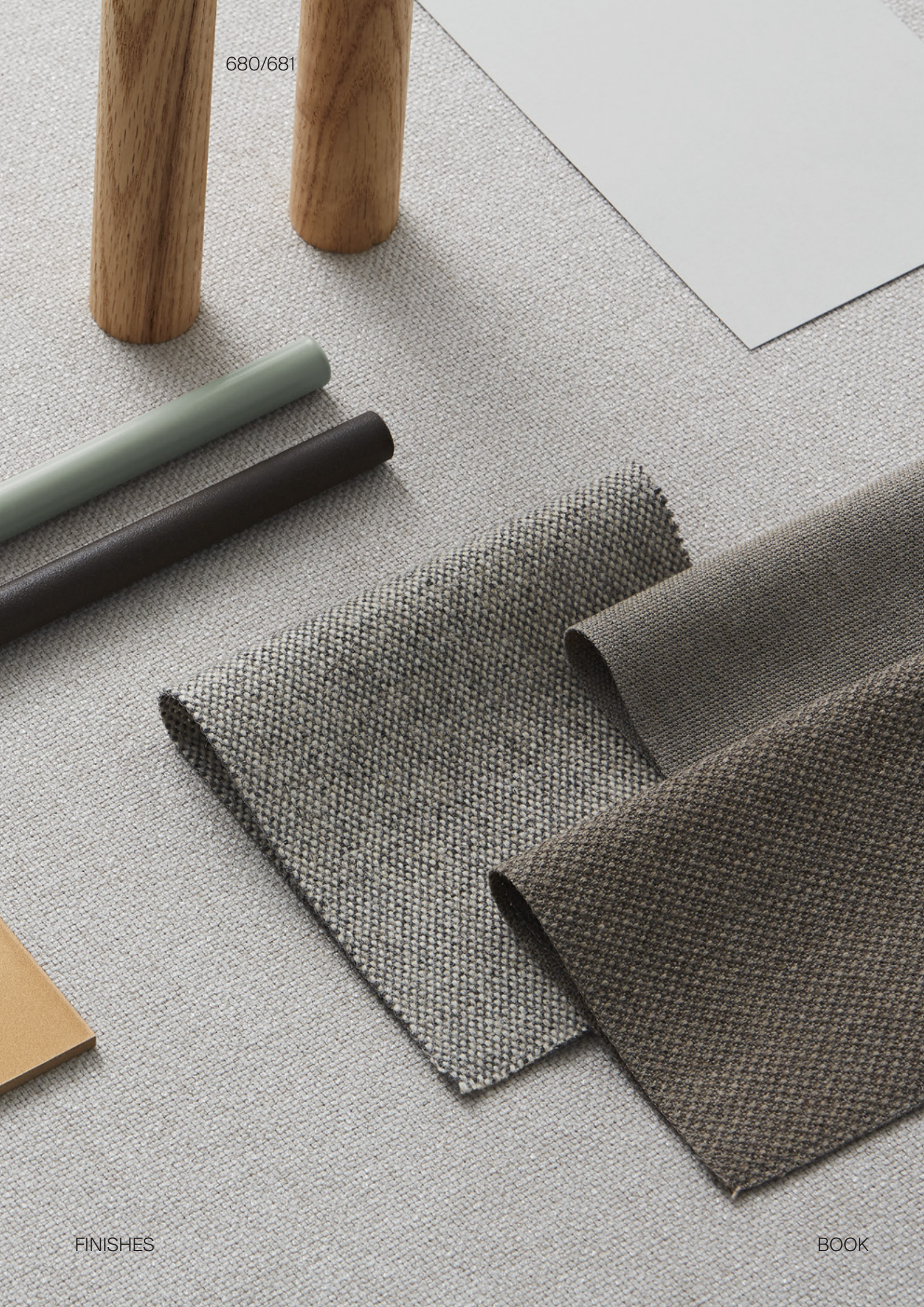


INCLASS



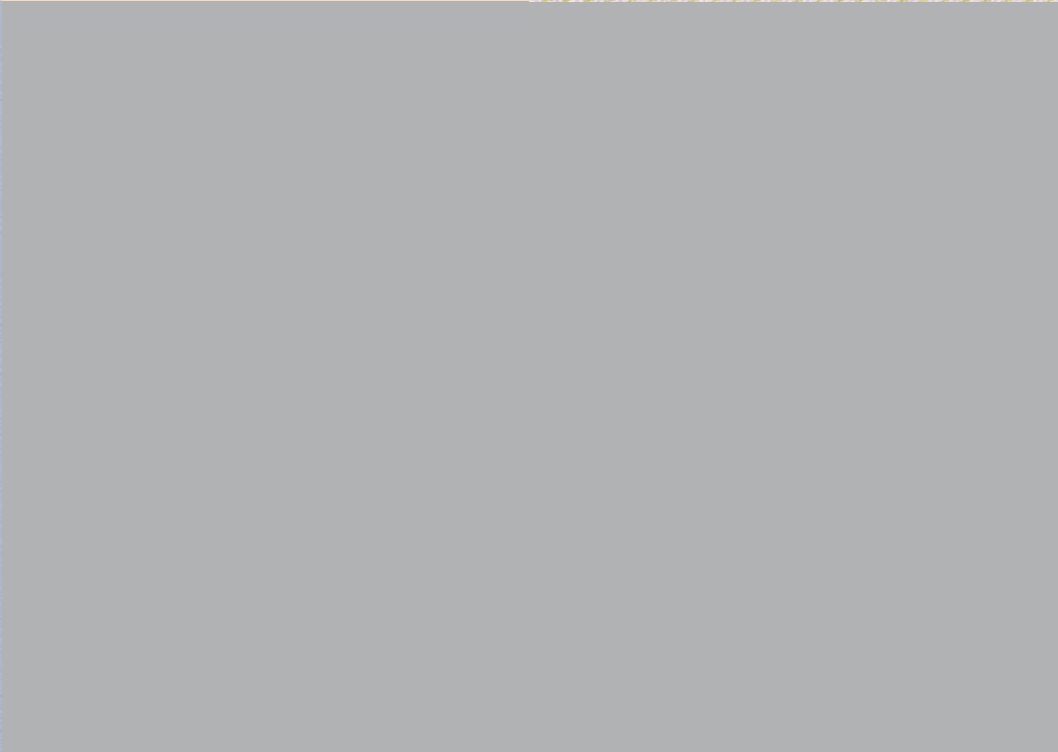
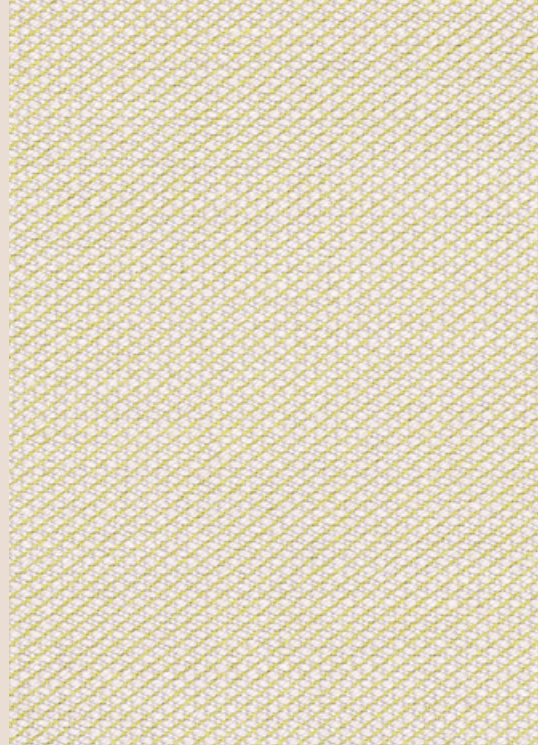


680/681





INCLASS





CASUAL

Quiet, relaxed environments  
away from noise and  
excessive pretensions.



INCLASS





684/685





2.



# FINISHES



## 2.1. UPHOLSTERY MATERIALS 690

Matrix by collections	694
G1 - Asis	696
G2 - Ars	698
G2 - Nok	700
G2 - Pixel	702
G2 - Cora	704
G2 - Hilton	706
G2 - Addo	708
G2 - Netex	710
G3 - Calma	712
G3 - Rivet	714
G3 - Era	716
G3 - Medley	718
G4 - Main Line Flax	720
G4 - Connect	722
G4 - Valencia	724
G4 - Step	726
G4 - Velvet mesh	728
G4 - Maxi	730
G5 - Dolce	732
G5 - Synergy	734
G5 - Remix	736
G5 - Canvas	738
G6 - Steelcut Trio	740
G6 - Fiord	742
G7 - Hallingdal	744
G10 - Piel	746
G11 - Piel	748

## 2.2. METAL PAINT & FINISHES 750

Matrix by collections	752
Sample card	754



## 2.3. WOOD 756

Matrix by collections	758
Veneer / Solid wood	760
Lacquered colours	762

## 2.4. POLYPROPYLENE 764

Matrix by collections	766
PP1 colours	768

## 2.5. ROTOMOLDED POLYETHYLENE 770

Polyethylene colours	772
Lacquered polyethylene colours	774

## 2.6. TABLE TOPS 776

Matrix by collections	778
Wood veneer tops	780
Lacquered tops	782



INCLASS

# UPHOLSTERY FABRICS & LEATHERS

All our upholstered products are locally handcrafted, making each piece unique.

The fabrics and leathers are priced by grades identified by an alpha numerical code: G1/G2/G3/G4/G5/G6/G7/G10/G11/G12

Upon approval, INCLASS products can be upholstered in customer's own fabrics (COM) or in customer's own leathers COL. Not all customer's materials are valid to upholster our products. They must be validated and approved by the INCLASS upholstery department.

- COM textiles will be priced as Grade 2.
- COL leathers will be priced as Grade 3.

All our fabrics and leathers may be purchased separately upon request. Consult our Customer Service for pricing.

The fabrics with stripes or patterns will be applied vertically unless customer specifies other way.

To guarantee a good finish, in some models, a backing must be added to some of the fabrics.

INCLASS offers a broad and selected range of upholsteries produced by top-level companies.

The maintenance, cleaning recommendations and technical data are the ones supplied by the producer for each collection.

Leather is a natural raw material with a non-uniform surface. The leather may show marks such as grain, wrinkles, veins and differences in colour or tone from one batch to another.

The samples in the finishes book are not to be considered a guarantee of perfect homogeneity between the sample and the real supply.

Items upholstered in light colours, especially white, make stains more visible and in many cases such as the dyes of garments impossible to remove. INCLASS shall not accept any liability for these kinds of stains.







# UPHOLSTERY FABRICS & LEATHERS

## **COM/COL service**

The Customer's Own Material (COM) and Customer's Own Leather (COL) services offers the opportunity for customers to have an INCLASS bespoke product with textiles or leathers especially selected by the customer.

Prior to order placement, if the COM/COL is not found in the INCLASS database of approved fabrics and leathers, a sample cutting of the required COM/COL must be submitted for approval.

If COM has stripes or patterns, the sample should be large enough to show the entire design of the fabric. Customer must identify the name and number of units on which the COM/ COL is to be applied.

Once approved, you can place your order. As soon as we receive and check COM/COL in our factory, our customer service will inform you about the production and delivery schedule.

Even after preliminary approval, INCLASS reserves the right to reject COM/COL if necessary when the quality is not satisfactory for the item it is intended to be used on. Even after preliminary approval, INCLASS assumes no responsibility for its overall appearance, durability or any other quality aspect, after being upholstered on our products. Subject to a specific agreements, INCLASS may buy for the customer the COM/COL materials.



## COM/COL requirements

Each COM/COL must be identified as follows to prevent order delays or material losses:

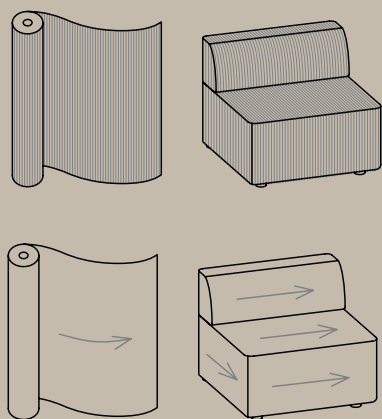
- Customer name and purchase order number.
- Clearly indicate the item to which COM/COL is to be applied
- The name of the fabric supplier. Supplier's fabric name with number and colour.

The COM requirements are based on 1,4 meter width plain material. In some models, the quantity of material needed can be optimized by increasing the units ordered. For this reason, our product sheets indicate the quantities required for orders from 1 to 7 units and for orders of more than 8 units. If you need a more accurate calculation, contact our Customer Service. If the fabric has a design that requires specific positioning or pattern matching, our Customer Service should be consulted for additional material requirement. On these type of fabrics an upcharge will be applied.

COL hides must be sent well packed and rolled in a neat manner avoiding creases and roll marks. The leathers can be rejected if are sent in a folded manner.

To determine COL quantity, see COL requirements for each product. Leather is a natural product with a non-uniform surface due to grain, wrinkles, veins and may present differences in tone from one batch to another. For this reason all square meter requirements are estimations. (COL) Square meter requirements are based on hides with an average size of 4-5 m<sup>2</sup> of clean usable leather. If the COL has a smaller average hide size, please consult our Customer Service. The usable surface and the shape of the COL hides supplied can make it necessary for us to request more leather after COL is received.

Excess COM/COL will not be returned with the shipment of furniture and will be disposed of after order is completed unless prior arrangements have been made with our Customer Service.



## Cutting Direction Guidelines

Cutting direction is based on the fabric width and the way the fabric is cut from the roll and applied to products. The INCLASS Upholstered products usually use the vertical direction. The vertical direction is understood as the direction of the unrolling, leaving the selvages on the right and left sides. The fabric is applied as shown in the illustration.



# UPHOLSTERY MATRIX BY COLLECTIONS

	ALTEA	ANN	ARC	ARUM	ARYN	ARYN MAX	ARYN WOOD	BINAR 60	BINAR EXECUTIVE	DIVIDERS / SCREENS	DUNAS LOUNGE	DUNAS XL	DUNAS XS	ENTROPY
<b>FABRICS &amp; LEATHERS</b>														
G1 - Asis	•	•	•	•	•	•	•	•	•	•	•	•	•	-
G2 - Ars	•	•	•	•	•	•	•	•	•	•	•	•	•	•
G2 - Nok	•	•	•	•	•	•	•	•	•	•	•	•	•	•
G2 - Pixel	•	•	•	•	•	•	•	•	•	•	•	•	•	•
G2 - Cora	•	•	•	•	•	•	•	•	•	•	•	•	•	•
G2 - Hilton	•	•	•	•	•	•	•	•	•	•	•	•	•	•
G2 - Addo	•	•	•	•	•	•	•	•	•	•	•	•	•	•
G2 - Netex	-	-	-	-	-	-	-	-	-	-	-	-	-	-
G3 - Calma	•	•	•	•	•	•	•	•	•	•	•	•	•	•
G3 - Rivet	•	•	•	•	•	•	•	•	•	•	•	•	•	•
G3 - Era	•	•	•	•	•	•	•	•	•	•	•	•	•	•
G3 - Medley	•	•	•	•	•	•	•	•	•	•	•	•	•	•
G4 - Main Line Flax	•	•	•	•	•	•	•	•	•	•	•	•	•	•
G4 - Connect	•	•	•	•	•	•	•	•	•	•	•	•	•	•
G4 - Step	•	•	•	•	•	•	•	•	•	•	•	•	•	•
G4 - Valencia	•	•	•	•	•	•	•	•	•	•	•	•	•	•
G4 - Velvet Mesh	-	-	-	-	-	-	-	-	-	-	-	-	-	-
G4 - Maxi	-	-	-	-	-	-	-	-	-	-	-	-	-	-
G5 - Dolce	•	•	•	•	•	•	•	•	•	•	•	•	•	•
G5 - Synergy	•	•	•	•	•	•	•	•	•	•	•	•	•	•
G5 - Remix	•	•	•	•	•	•	•	•	•	•	•	•	•	•
G5 - Canvas	•	•	•	•	•	•	•	•	•	•	•	•	•	•
G6 - SteelCut Trio	•	•	•	•	•	•	•	•	•	•	•	•	•	•
G6 - Fiord	•	•	•	•	•	•	•	•	•	•	•	•	•	•
G7 - Hallingdal	•	•	•	•	•	•	•	•	•	•	•	•	•	•
G10 - Piel	•	•	•	•	•	•	•	•	•	-	•	•	•	○
G11 - Piel	•	•	•	•	•	•	•	•	•	-	•	•	•	○



LEGEND

- Not available
- Available
- See specifications

ESCALAS	ESITT	ITEK PRO	KORI	LAPSE	LEA	LIN TAPIZ	LIN WOOD	MARCUS	NIIM	PAU	PLANIA BENCH	SUN	TAIA	TAO	TETRIS 2.0	UNNIA	UNNIA TAPIZ	VARYA	VARYA TAPIZ	VARYA WOOD	WUDI	XAIL	
●	●	●	●	●	●	●	●	-	●	●	●	●	●	●	●	●	●	●	●	●	●	-	●
●	●	●	●	●	●	●	●	●	●	●	●	●	●	●	●	●	●	●	●	●	●	●	●
●	●	●	●	●	●	●	●	●	●	●	●	●	●	●	●	●	●	●	●	●	●	●	●
●	●	●	●	●	●	●	●	●	●	●	●	●	●	●	●	●	●	●	●	●	●	●	●
●	●	●	●	●	●	●	●	●	●	●	●	●	●	●	●	●	●	●	●	●	●	●	●
●	●	●	●	●	●	●	●	●	●	●	●	●	●	●	●	●	●	●	●	●	●	●	●
-	●	●	-	-	-	-	-	-	-	-	-	-	-	-	-	-	-	-	-	-	-	-	-
●	●	●	●	●	●	●	●	●	●	●	●	●	●	●	●	●	●	●	●	●	●	●	●
●	●	●	●	●	●	●	●	●	●	●	●	●	●	●	●	●	●	●	●	●	●	●	●
●	●	●	●	●	●	●	●	●	●	●	●	●	●	●	●	●	●	●	●	●	●	●	●
●	●	●	●	●	●	●	●	●	●	●	●	●	●	●	●	●	●	●	●	●	●	●	●
●	●	●	●	●	●	●	●	●	●	●	●	●	●	●	●	●	●	●	●	●	●	●	●
●	●	●	●	●	●	●	●	●	●	●	●	●	●	●	●	●	●	●	●	●	●	●	●
●	●	●	●	●	●	●	●	●	●	●	●	●	●	●	●	●	●	●	●	●	●	●	●
●	●	●	●	●	●	●	●	●	●	●	●	●	●	●	●	●	●	●	●	●	●	●	●
●	●	●	●	●	●	●	●	●	●	●	●	●	●	●	●	●	●	●	●	●	●	●	●
●	●	●	●	●	●	●	●	●	●	●	●	●	●	●	●	●	●	●	●	●	●	●	●
○	●	●	●	●	●	●	●	●	●	○	●	●	●	●	○	●	●	●	●	●	●	●	●
○	●	●	●	●	●	●	●	●	●	○	●	●	●	●	○	●	●	●	●	●	●	●	●

INCLASS

# G1 - ASIS <sup>NEW</sup>

## TECHNICAL DATA

**Composition:**

100% polyester.

**Light fastness:**

5 - 6, ISO 105 B02, Method 2.

**Abrasion:**

100.000 Martindale EN ISO 12947-2.

**Resistance to pilling:**

4 - 5, ISO 12945-2:002.

**Rubbing fastness in humid state:**

4, ISO 105-X12.

**Rubbing solvents:**

4, ISO 105-X12.

**Tear strength:**

Warp 140N.

Weft 110N, EN ISO 13937-3.

**Flammability:**

EN 1021 - 1/2.

BS 5852 0.

BS 7176 Low Hazard.

CAL TB 117 Section 1.

NFPA 260 Class 1.

Regulation n° 118 UNECE Annexed 6.

IMO MSC.307 (88) Annexed I Part 8.

**Width:** 140cm

**Weight:** 335gr/m<sup>2</sup>



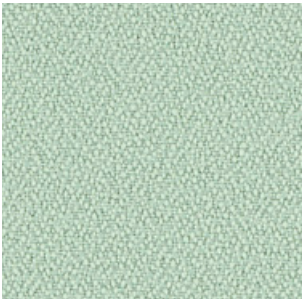
\*\*\*Batch to batch variations may occur within commercial tolerances.

**Note:**

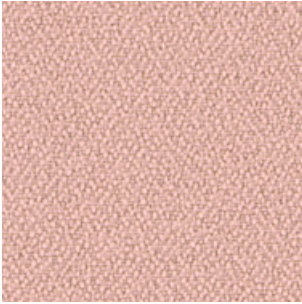
- The real colours and tones of the fabrics may differ from the digital image due to the scan process and the colour calibration of the different screens. Always request real fabric samples before ordering.

- Consult our Fabric and Leather Matrix to know about the availability of this material by product line.

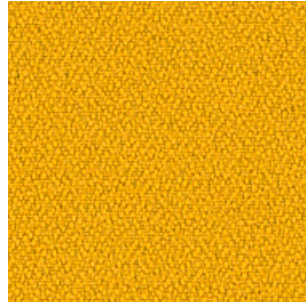




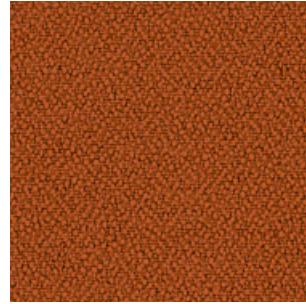
198



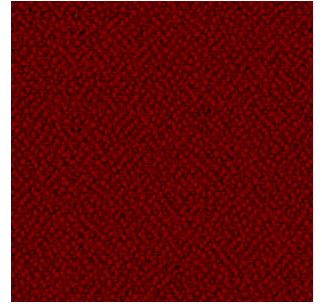
315



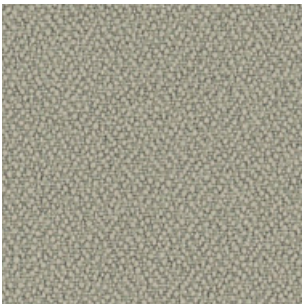
88



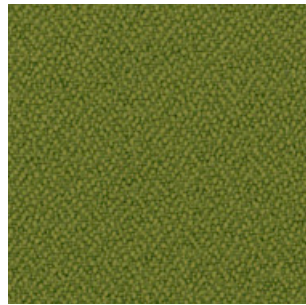
122



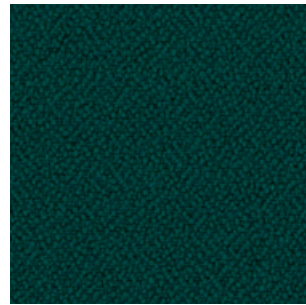
4011



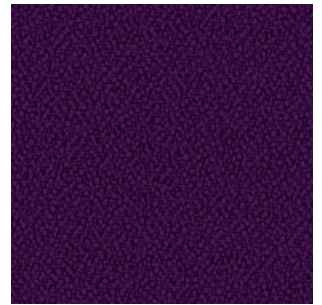
422



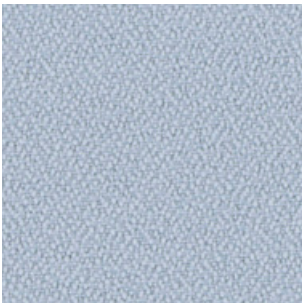
77



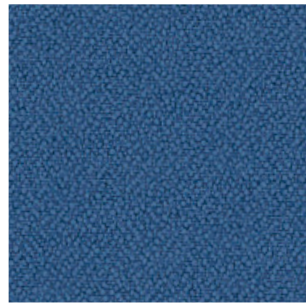
47



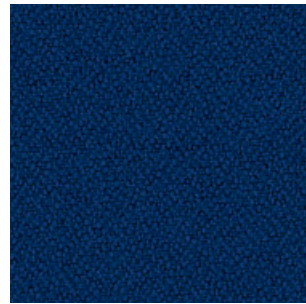
292



86



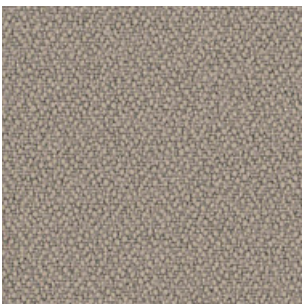
4



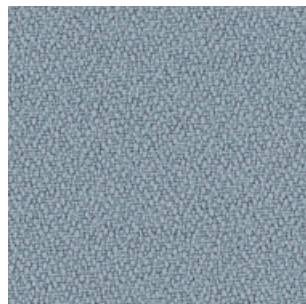
5



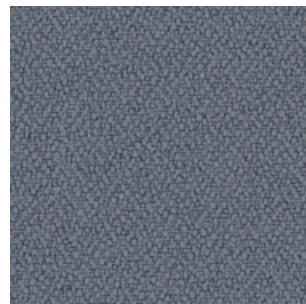
26



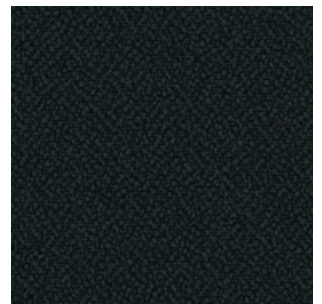
132



170



108



9

INCLASS

# G2 - ARS<sup>NEW</sup>

## TECHNICAL DATA

**Composition:**

100% polyester.

**Light fastness:**

5, ISO 105 B02, Method 2.

**Abrasion:**

90.000 Martindale EN ISO 12947-2.

**Resistance to pilling:**

4 - 5, ISO 12945-2:002.

**Rubbing fastness in humid state:**

5, ISO 105-X12:2001.

**Rubbing solvents:**

4 - 5, ISO 105-X12:2001.

**Seam strength:**

Warp 3,7mm.

Weft 0,2mm, EN ISO 13936-2.

**Seam strength:**

Warp 75,6N.

Weft 65,1N, EN ISO 13937-3.

**Flammability:**

EN 1021 - 1 (cigarette).

**Environment:**

OEKO-TEX® Standard 100.

**Width:** 140cm

**Weight:** 250gr/m<sup>2</sup>



\*\*\*Batch to batch variations may occur within commercial tolerances.



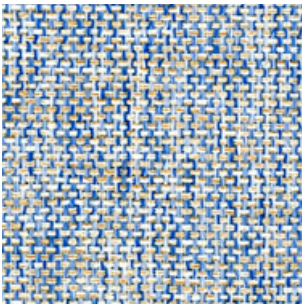
**Note:**

- The real colours and tones of the fabrics may differ from the digital image due to the scan process and the colour calibration of the different screens. Always request real fabric samples before ordering.
- Consult our Fabric and Leather Matrix to know about the availability of this material by product line.

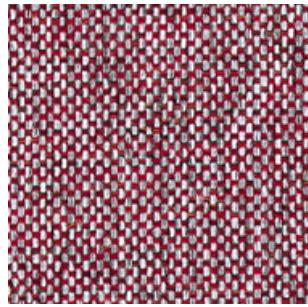




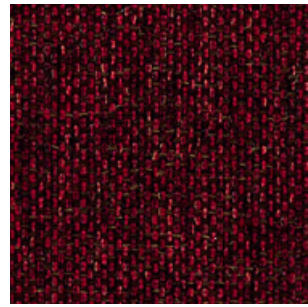
90



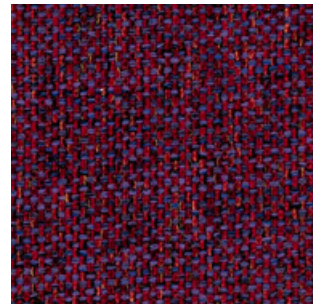
74



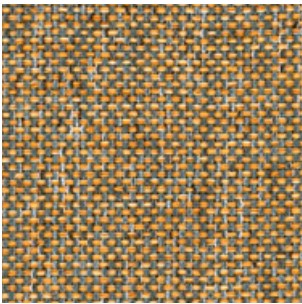
27



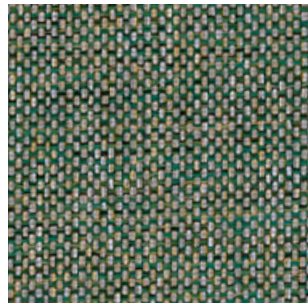
59



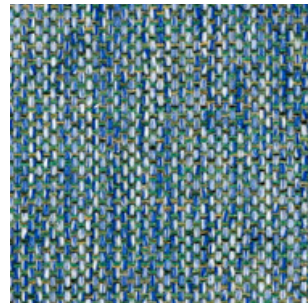
68



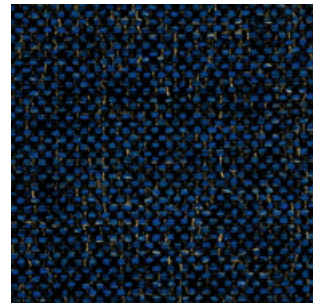
45



35



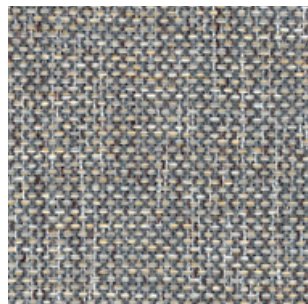
75



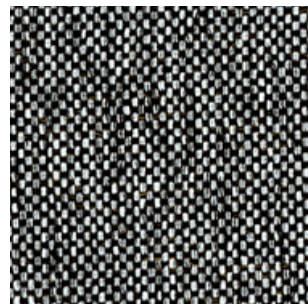
79



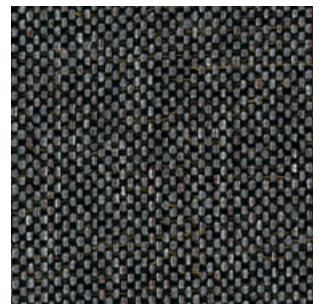
87



88



98



99

INCLASS

# G2 - NOK<sup>NEW</sup>

## TECHNICAL DATA

**Composition:**

100% polyester.

**Light fastness:**

4 - 5, EN ISO 105 B02, Method 2.

**Abrasion:**

45.000 - 50.000 Martindale EN ISO 12947-1, 2.

**Resistance to pilling:**

4, EN ISO 12945-2:2002.

**Rubbing fastness in humid state:**

4 - 5, ISO 105-X12:2001.

**Rubbing solvents:**

4 - 5, ISO 105-X12:2001.

**Seam strength:**

Warp 3,6 - 4,0mm.

Weft 3,5 - 3,9mm, EN ISO 13936-2.

**Tear strength:**

Warp exceed 65 - 72N.

Weft exceed 41 - 46N, EN ISO 13937-3.

**Flammability:**

EN 1021 - 1 (cigarette).

**Environment:**

OEKO-TEX® Standard 100.

**Width:** 140cm

**Weight:** 330gr/m<sup>2</sup>



\*\*\*Batch to batch variations may occur within commercial tolerances.



**Note:**

- The real colours and tones of the fabrics may differ from the digital image due to the scan process and the colour calibration of the different screens. Always request real fabric samples before ordering.
- Consult our Fabric and Leather Matrix to know about the availability of this material by product line.

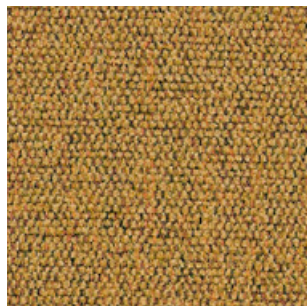




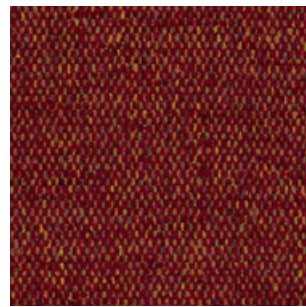
2



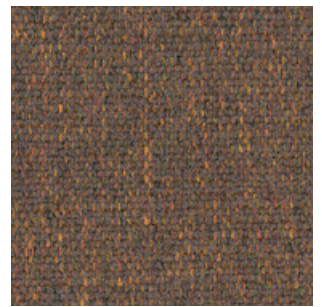
6



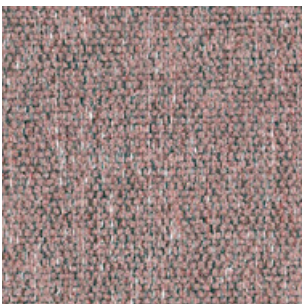
45



59



56



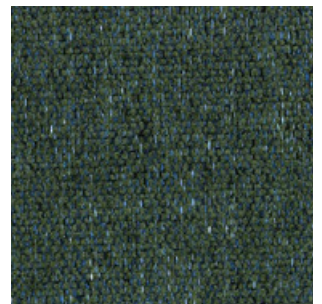
61



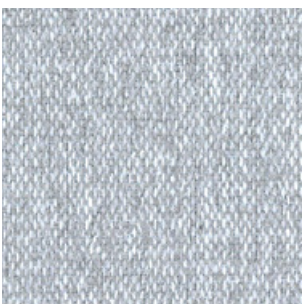
69



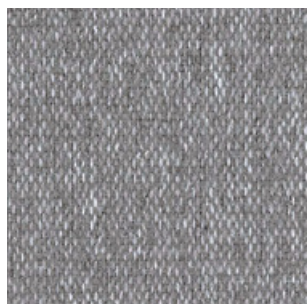
79



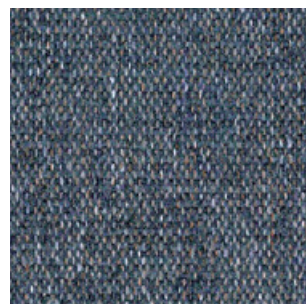
39



81



90



95



99

INCLASS

# G2 - PIXEL

## TECHNICAL DATA

**Composition:**

100% polyolefin.

**Light fastness:**

5 - 6, UNE-EN ISO 105-B02:2001 +A1:2002. Method 2.

**Abrasion:**

40.000 Martindale EN ISO 14465:2004.

**Resistance to pilling:**

4 - 5, UNE-EN 14465:2004.

**Dye fastness to rubbing:**

Wet 4 - 5.

Dry 4 - 5, UNE-EN ISO 105-X12:2003.

**Tear Resistance:**

Warp 120N.

Weft 130N UNE-EN ISO 13937-3:2001.

**Flammability:**

EN 1021-1:2015 (cigarette)

BS 5852:2006 (cigarette)

DIN 66084:2003-7 classification P- c

CAL TB 117:2013 Section 1: COVER FABRIC TEST NFPA 260:2013 CLASS 1.

**Width:** 140cm

**Weight:** 255gr/m<sup>2</sup>



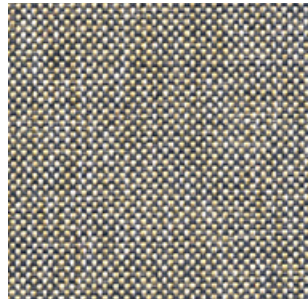
\*\*\*Batch to batch variations may occur within commercial tolerances.



**Note:**

- The real colours and tones of the fabrics may differ from the digital image due to the scan process and the colour calibration of the different screens. Always request real fabric samples before ordering.
- Consult our Fabric and Leather Matrix to know about the availability of this material by product line.

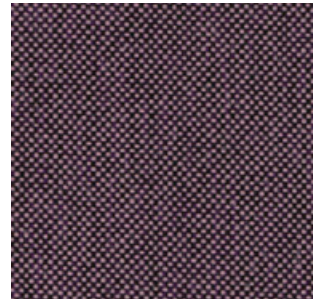




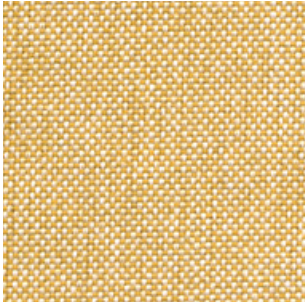
12



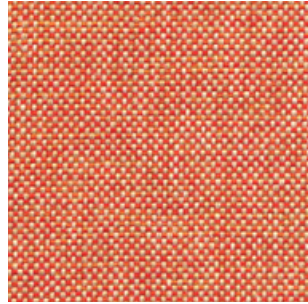
3



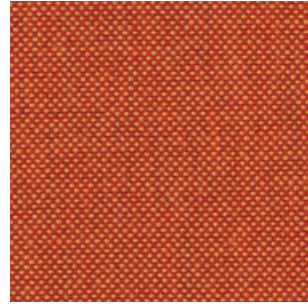
90



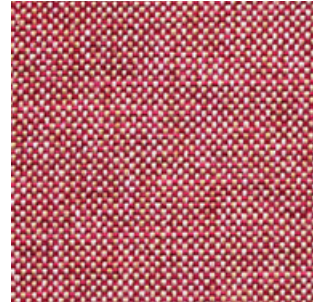
50



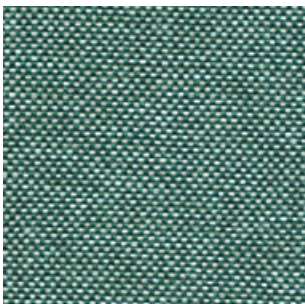
53



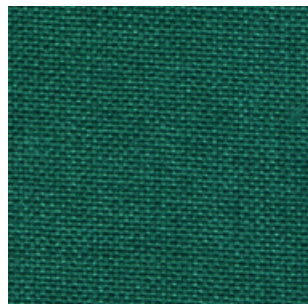
62



54



101



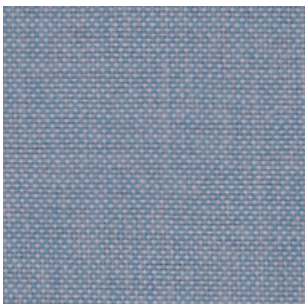
102



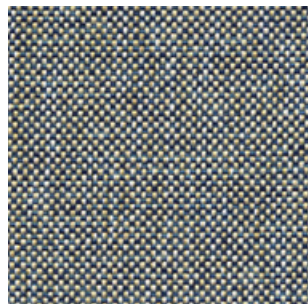
41



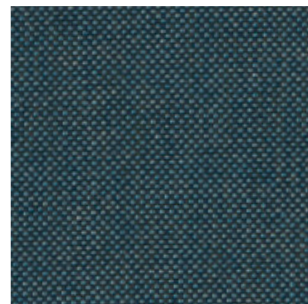
43



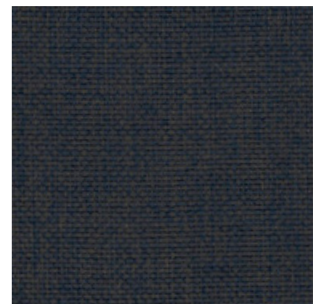
84



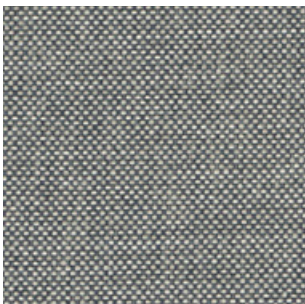
71



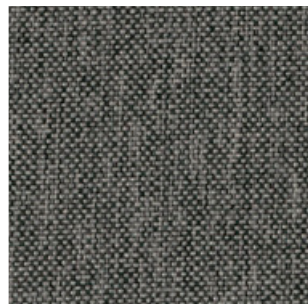
78



247



19



21



29



801

INCLASS

# G2 - CORA

## TECHNICAL DATA

**Composition:**

100% polyester.

**Light fastness:**

5 EN ISO 105-B02, Method 2.

**Abrasion:**

83.000 Martindale EN ISO 12947-1, 2.

**Resistance to pilling:**

4, EN ISO 12945-2:2002.

**Rubbing fastness in humid state:**

5, ISO 105-X12:2001.

**Rubbing solvents:**

5, ISO 105-X12:2001.

**Seam strength:**

Warp 2,5mm.

Weft 3,7mm, ISO 13936-2.

**Tear strength:**

Warp exceed 154,2N.

Weft exceed 112,3N, EN ISO 13937-3.

**Width:** 140cm

**Weight:** 330gr/m<sup>2</sup>



\*\*\*Batch to batch variations may occur within commercial tolerances.



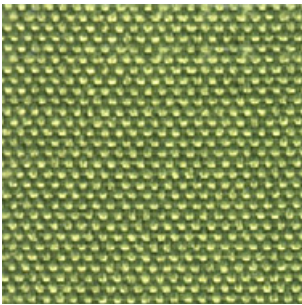
**Note:**

- The real colours and tones of the fabrics may differ from the digital image due to the scan process and the colour calibration of the different screens. Always request real fabric samples before ordering.
- Consult our Fabric and Leather Matrix to know about the availability of this material by product line.

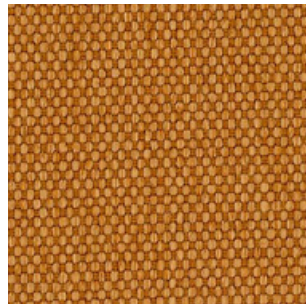




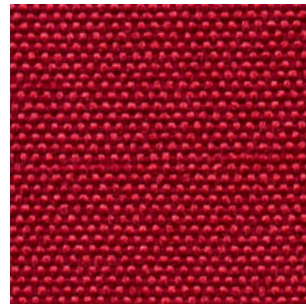
21



32



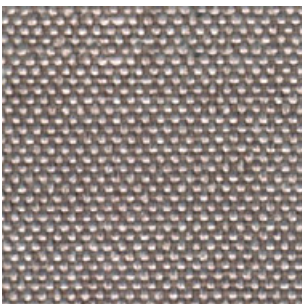
48



60



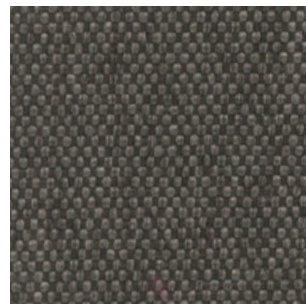
65



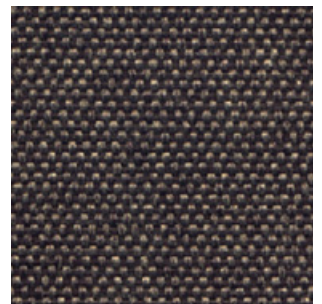
12



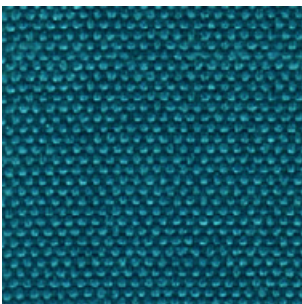
40



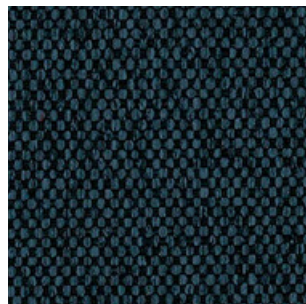
115



27



17



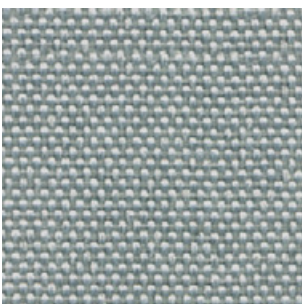
37



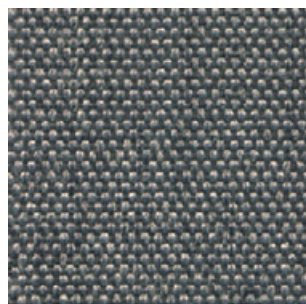
18



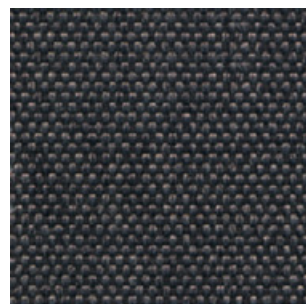
38



3



14



20



2

INCLASS

# G2 - HILTON

## TECHNICAL DATA

**Composition:**

100% polyester.

**Light fastness:**

4, ISO 105 B02:1994.

**Abrasion:**

>25.000 Martindale ISO 12947-2:1998.

**Resistance to pilling:**

4 - 5, ISO 12945-2.

**Tear strength:**

Warp 63N.

Weft 63N, ISO13937-3:2000.

**Dye fastness to rubbing:**

Wet 4 - 5. Dry 4 - 5, ISO 105X12:2001.

**Width:** 140cm

**Weight:** 380gr/m<sup>2</sup>



\*\*\*Batch to batch variations may occur within commercial tolerances.



**Note:**

- The real colours and tones of the fabrics may differ from the digital image due to the scan process and the colour calibration of the different screens. Always request real fabric samples before ordering.
- Consult our Fabric and Leather Matrix to know about the availability of this material by product line.





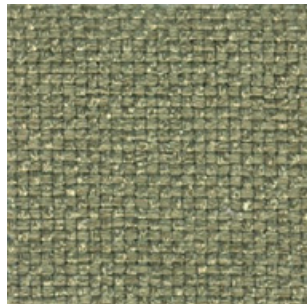
6



4



2



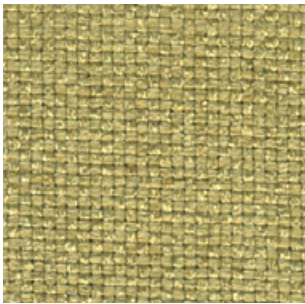
18



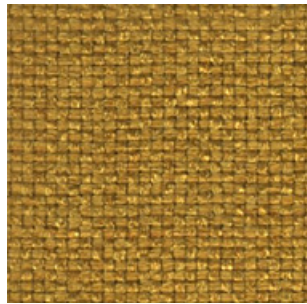
8



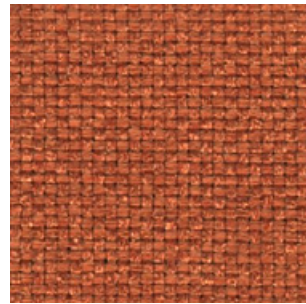
9



17



10



11



12



16



13



14



1

INCLASS

# G2 - ADDO

## TECHNICAL DATA

**Composition:**

80% polyester, 20% cotton.

**Light fastness:**

5, ISO 105 B02, Method 2.

**Abrasion:**

40.000 Martindale ISO 12947-1, 2.

**Resistance to pilling:**

4, ISO 12945-2:002.

**Rubbing fastness in humid state:**

3, ISO 105-X12:2001.

**Rubbing solvents:**

4 - 5, ISO 105-X12:2001.

**Seam strength:**

Warp 3mm.

Weft 2mm, ISO 13936-2.

**Tear strength:**

Warp exceed 175,1N.

Weft exceed 120,7N, EN ISO 13937-3.

**Flammability:**

EN 1021 - 1 (cigarette).

**Width:** 140cm

**Weight:** 365gr/m<sup>2</sup>



\*\*\*Batch to batch variations may occur within commercial tolerances.

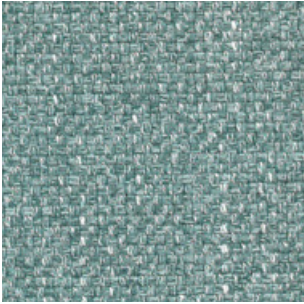


**Note:**

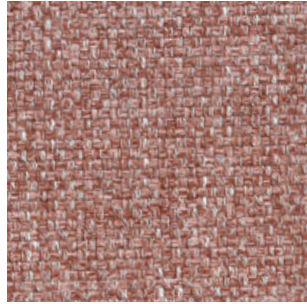
- The real colours and tones of the fabrics may differ from the digital image due to the scan process and the colour calibration of the different screens. Always request real fabric samples before ordering.

- Consult our Fabric and Leather Matrix to know about the availability of this material by product line.

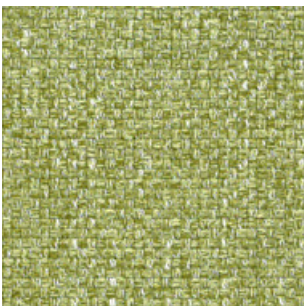




12



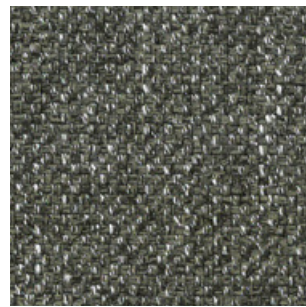
10



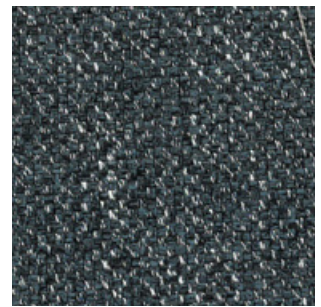
14



15



16



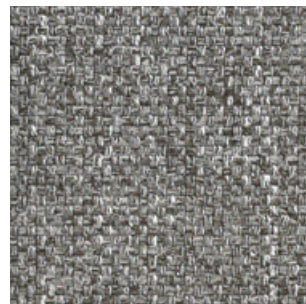
11



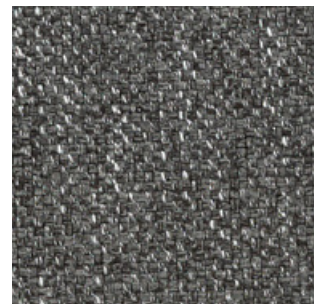
5



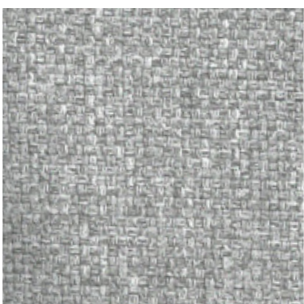
6



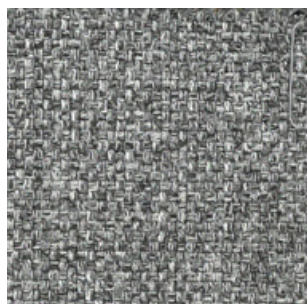
7



8



4



3



30



1

INCLASS

# G2 - NETEX<sup>NEW</sup>

3D MESH

## TECHNICAL DATA

**Composition:**

PES 100%.

**Lightfastness:**

4 - 5, ISO 105-B02.

**Abrasion:**

45.000 Martindale, EN ISO 12947-2.

**Breaking strength:**

Wrap N 620.

Weft N 1.200, EN ISO 13934-1.

**Resistance to pilling:**

5, EN ISO 12945-2.

**Colour fastness to perspiration:**

Acid 5

Alkaline 5, UNE-EN ISO 105-E04.

**Flammability:**

CA TB 117

EN ISO 10211 Cigarette.

**Width:** ±160cm

**Weight:** ±300gr/m<sup>2</sup>



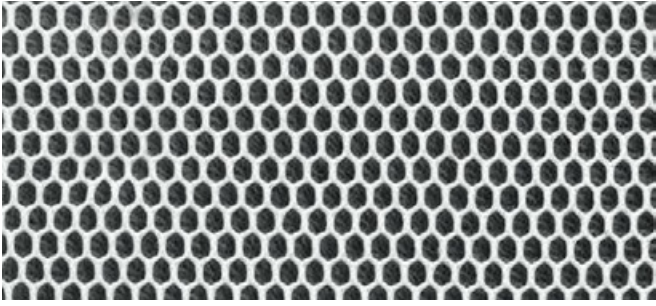
\*\*\*Batch to batch variations may occur within commercial tolerances.

**Note:**

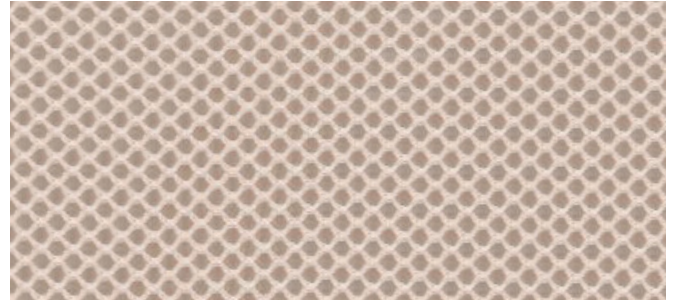
- The real colours and tones of the fabrics may differ from the digital image due to the scan process and the colour calibration of the different screens. Always request real fabric samples before ordering.

- Consult our Fabric and Leather Matrix to know about the availability of this material by product line.

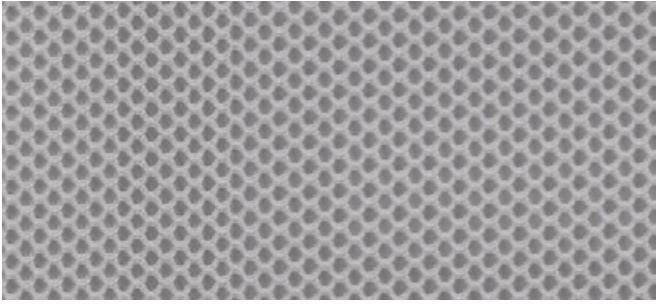




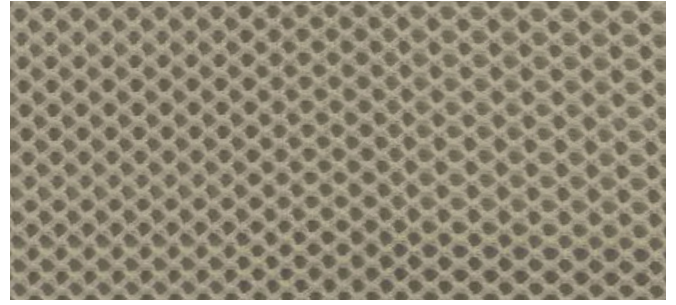
201



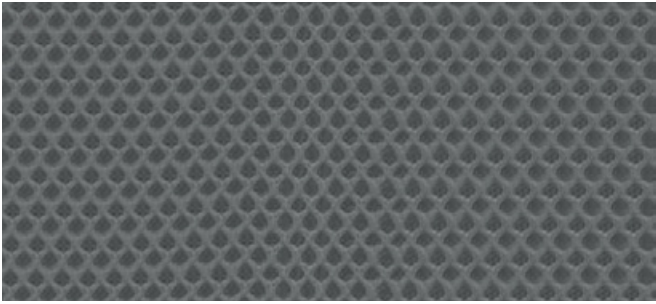
213



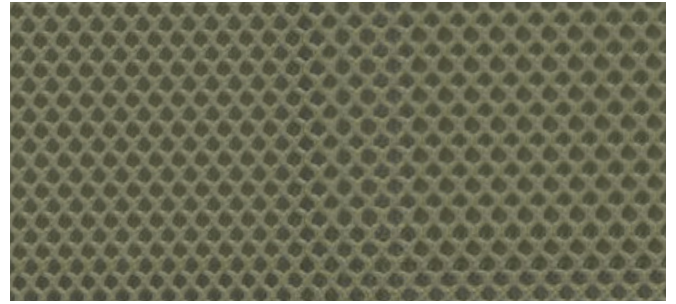
227



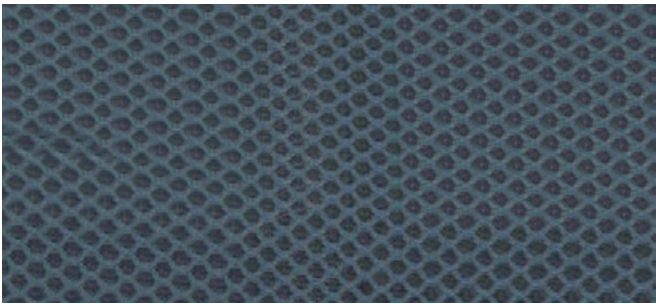
210



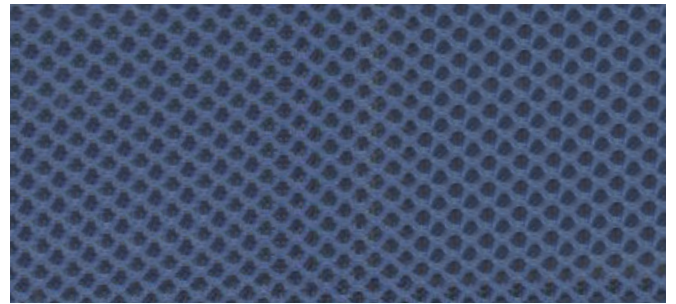
231



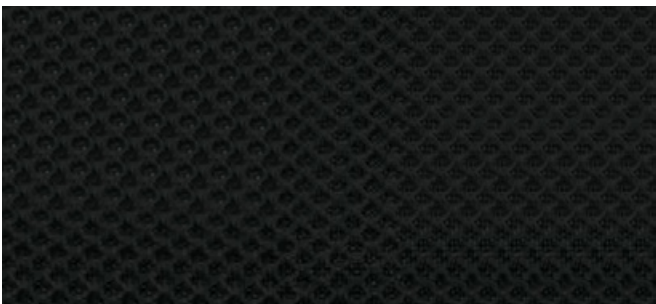
263



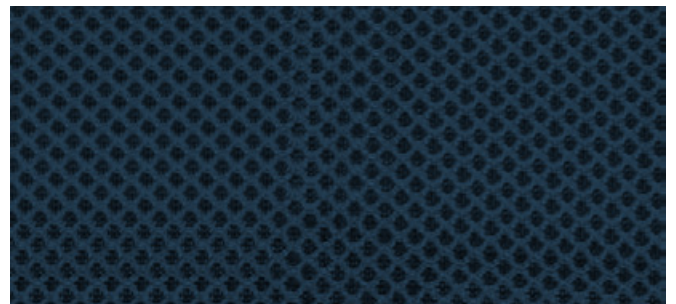
234



242



212



211

INCLASS

# G3 - CALMA <sup>NEW</sup>

## TECHNICAL DATA

### Composition:

Topcoat: 70% Vinyl, 30% P.U.  
Backing: 100% Microfiber Polyester.

### Light fastness:

>4.

### Abrasion:

>100.000 Martindale.

### Breaking strength:

Warp >180N.  
Weft >330N, ISO 1421.

### Tear strength:

Warp >25N/cm.  
Weft >28N/cm, ISO 4674-1.

### Flex Bally:

>100.000 cycles.

**Width:** 140cm.

**Weight:** 853gr/m<sup>2</sup>.



\*\*\*Batch to batch variations may occur within commercial tolerances.

### Note:

- The real colours and tones of the fabrics may differ from the digital image due to the scan process and the colour calibration of the different screens. Always request real fabric samples before ordering.
- Consult our Fabric and Leather Matrix to know about the availability of this material by product line.





407



415



425



477



412



411



421



401



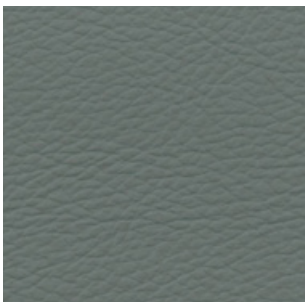
418



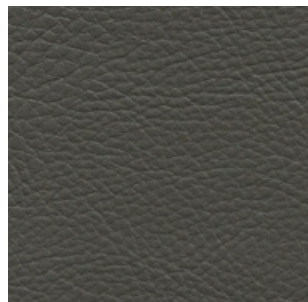
419



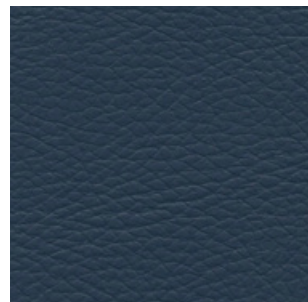
423



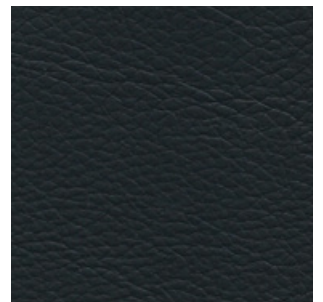
470



475



469



490

INCLASS

# G3 - RIVET <sup>NEW</sup>

By Camira

## TECHNICAL DATA

**Composition:**

100% REPREVE® recycled polyester.

**Light fastness:**

6, EN ISO 105-B02: 2014, Method 3.

**Abrasion:**

≥80.000 Martindale EN ISO 12947-2: 2016

**Fastness to rubbing:**

Wet 4.

Dry 4, ISO 105 X12.

**Flammability:**

EN 1021 - 1 (cigarette).

EN 1021 - 2 (match).

BS 7176 Low Hazard.

UNI 9175 Class 1 IM.

**Environment:**

Complies with EU Ecolabel.

Certificate Indoor Advantage™ Gold.

**Width:** 140cm

**Weight:** 280gr/m<sup>2</sup>



\*\*\*Batch to batch variations may occur within commercial tolerances.

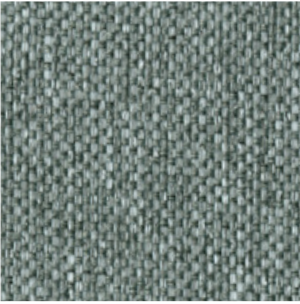


**100%**  
recycled material  
Post Consumer  
Recycled  
Polyester

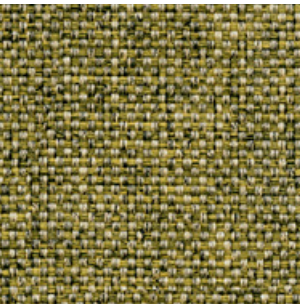
**Note:**

- The real colours and tones of the fabrics may differ from the digital image due to the scan process and the colour calibration of the different screens. Always request real fabric samples before ordering.
- Consult our Fabric and Leather Matrix to know about the availability of this material by product line.

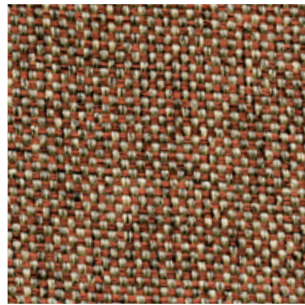




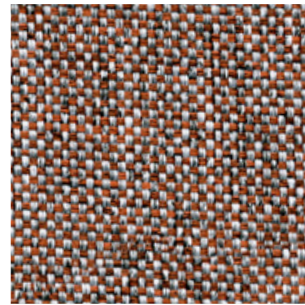
26



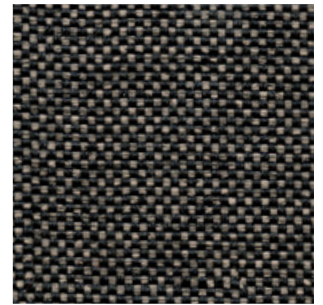
10



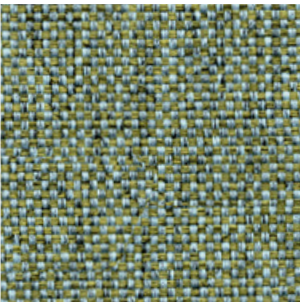
14



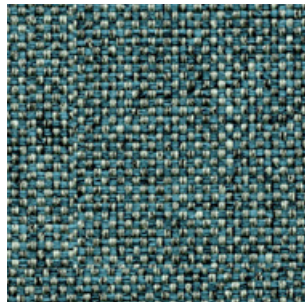
09



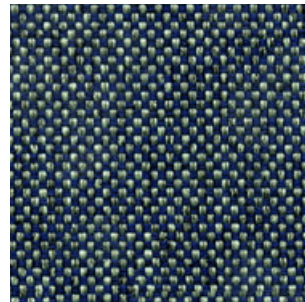
36



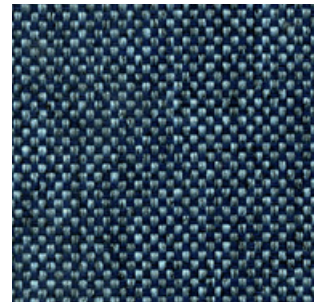
11



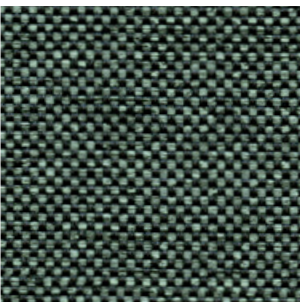
21



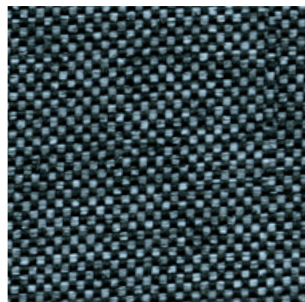
27



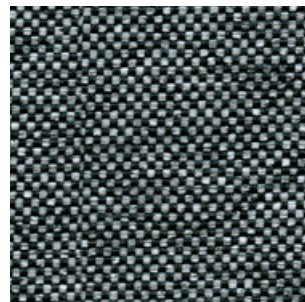
24



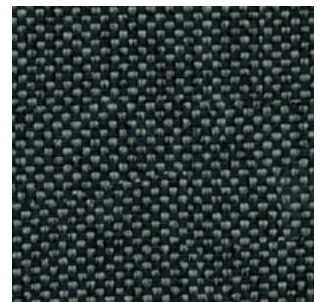
34



48



50



37

INCLASS

# G3 - ERA <sup>NEW</sup>

By Camira

## TECHNICAL DATA

**Composition:**

100% polyester.

**Light fastness:**

5, EN ISO 105 B02.

**Abrasion:**

≥100.000 Martindale EN ISO 12947.

**Fastness to rubbing:**

Wet 4.

Dry 4, ISO 105 X12.

**Flammability:**

EN 1021 - 1 (cigarette).

EN 1021 - 2 (match).

BS 7176 Low Hazard.

EN 13501-1 Adhered Class B, s1, d0.

EN 13501-1 Un-adhered Class C, s1, d0.

**Environment:**

OEKO-TEX® Standard 100.

Certificate Indoor Advantage™ Gold.

**Width:** 140cm

**Weight:** 320gr/m<sup>2</sup>



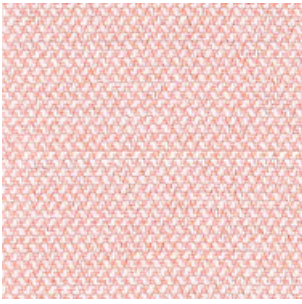
\*\*\*Batch to batch variations may occur within commercial tolerances.



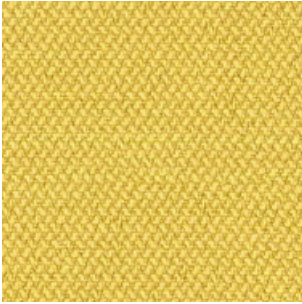
**Note:**

- The real colours and tones of the fabrics may differ from the digital image due to the scan process and the colour calibration of the different screens. Always request real fabric samples before ordering.
- Consult our Fabric and Leather Matrix to know about the availability of this material by product line.

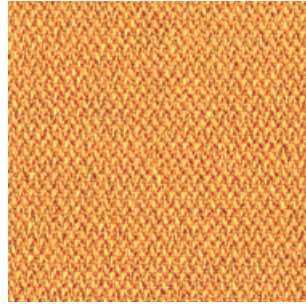




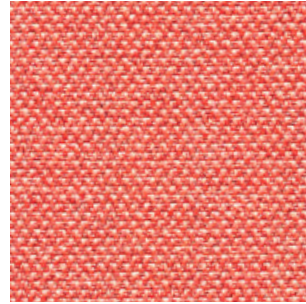
19



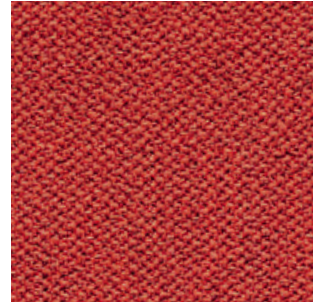
3



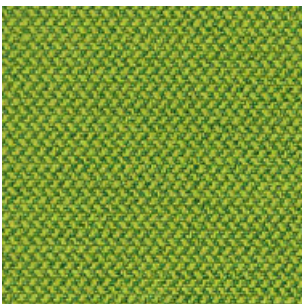
27



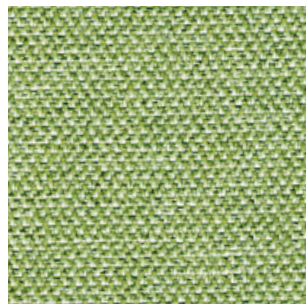
26



29



16



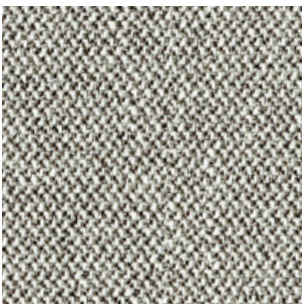
34



1



2



45



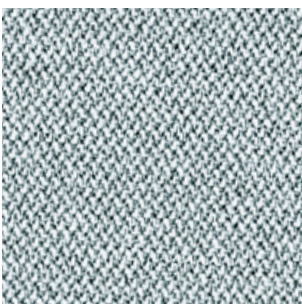
11



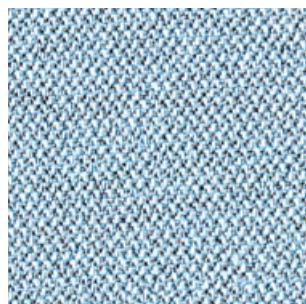
13



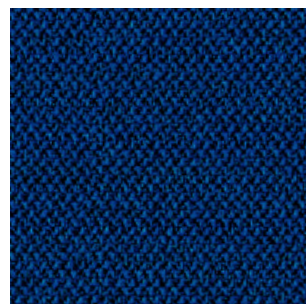
21



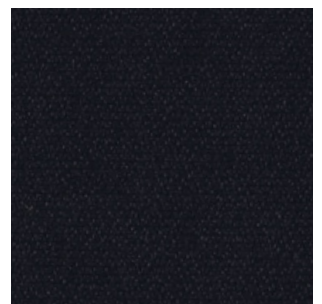
46



39



40



14

INCLASS

# G3 - MEDLEY

By Gabriel

## TECHNICAL DATA

### Composition:

100% polyester.

### Light fastness:

5 - 7, EN ISO 105 B02.

### Abrasion:

75.000 Martindale EN ISO 12947-2.

### Resistance to pilling:

4, EN ISO 12945-2.

### Fastness to rubbing:

Wet 4 - 5.

Dry 4 - 5, ISO 105 X12.

### Flammability:

BS EN 1021 1&2 Cigarette and Match.

BS EN 1021-1 Cigarette.

BS 5852 Part 1 0,1 Cigarette and Match.

BS 476 Part 7, class 2.

Class Uno UNI 9174 - UNI 8457.

ÖNORM B 3825-B2-3800-Q1 UK.

CA TB 117-2013

ASTM E 84.

### Environment:

Oeko-Tex® standard 100

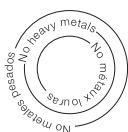
100% free of heavy metals.

Width: 140cm

Weight: 510gr/m<sup>2</sup>



\*\*\*Batch to batch variations may occur within commercial tolerances.



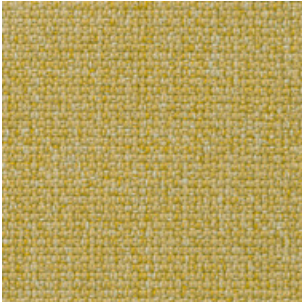
### Note:

- The real colours and tones of the fabrics may differ from the digital image due to the scan process and the colour calibration of the different screens. Always request real fabric samples before ordering.
- Consult our Fabric and Leather Matrix to know about the availability of this material by product line.





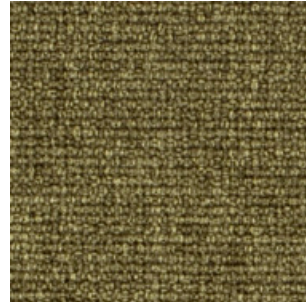
65011



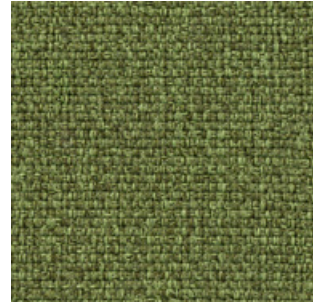
62054



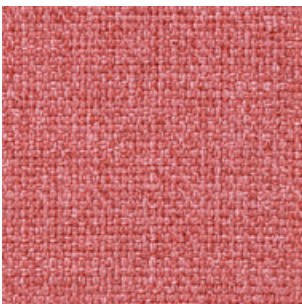
61003



67002



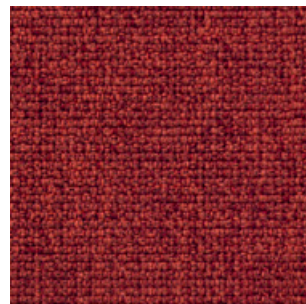
68005



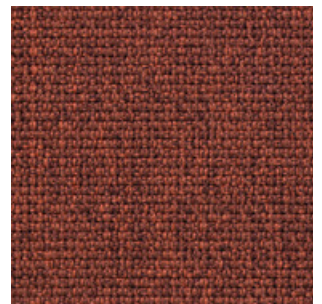
63064



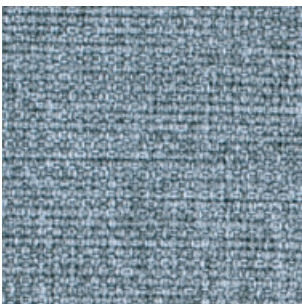
64019



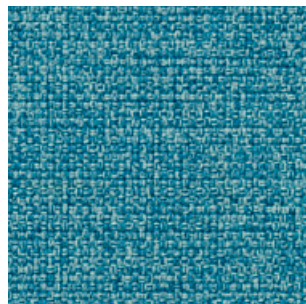
63016



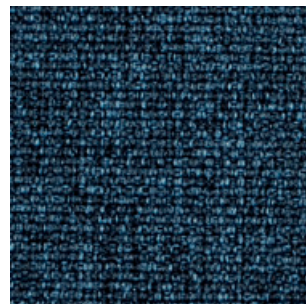
63063



66008



67006



66010



61004



60003



60167



60004



60999

INCLASS

# G4 - MAIN LINE FLAX<sup>NEW</sup>

By Camira

## TECHNICAL DATA

**Composition:**

75% virgin wool, 25% flax.

**Light fastness:**

5, ISO 105 B02.

**Abrasion:**

≥50.000 Martindale EN ISO 12947-2:1999.

**Resistance to pilling:**

4 - 5, ISO 12945-2.

**Fastness to rubbing:**

Wet 3.

Dry 4, ISO 105 X12.

**Flammability:**

EN 1021 - 1 (cigarette).

EN 1021 - 2 (match).

BS 7176 Low Hazard.

BS 5852 Ignition source 5.

BS 7176 Medium Hazard.

NF D 60-013.

ÖNORM B 3825 & A 3800-1.

UNI 9175 Class 1 IM.

BS 5867-2: Type B Curtains & Drapes.

IMO FTP Code (Part 8).

**Environment:**

Complies with EU Ecolabel.

Certificate Indoor Advantage™ Gold.

**Width:** 140cm

**Weight:** 437gr/m<sup>2</sup>



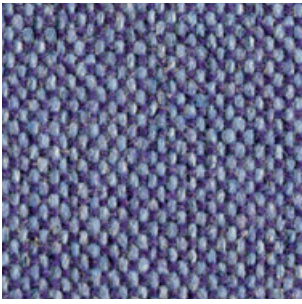
\*\*\*Batch to batch variations may occur within commercial tolerances.



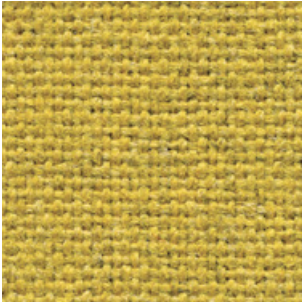
**Note:**

- The real colours and tones of the fabrics may differ from the digital image due to the scan process and the colour calibration of the different screens. Always request real fabric samples before ordering.
- Consult our Fabric and Leather Matrix to know about the availability of this material by product line.

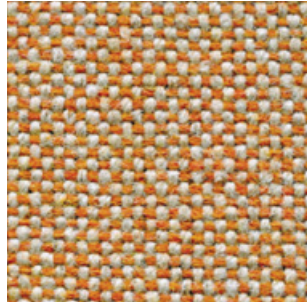




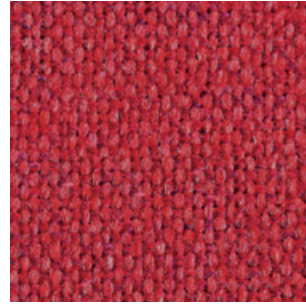
27



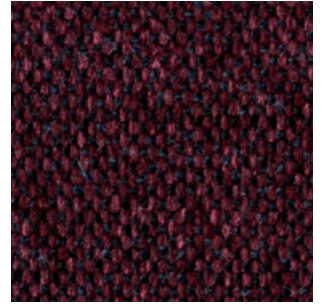
17



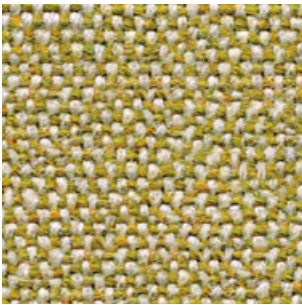
8



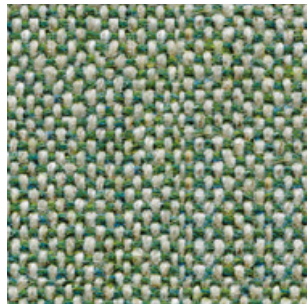
1



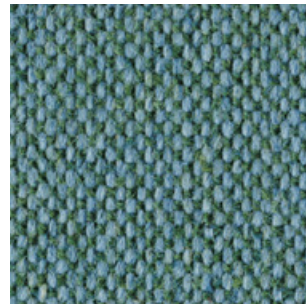
40



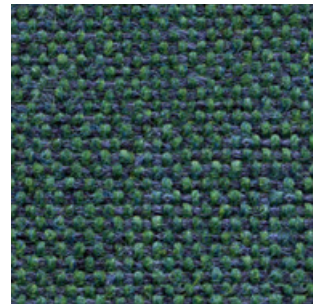
7



9



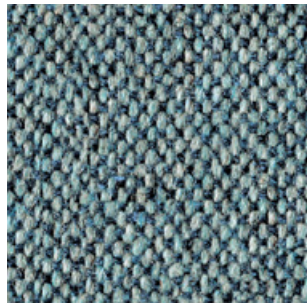
25



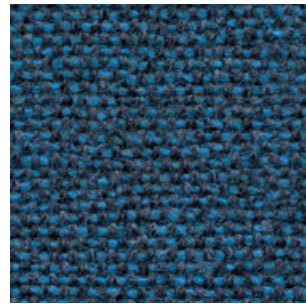
32



2



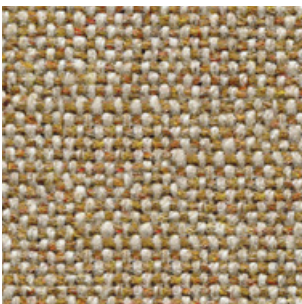
22



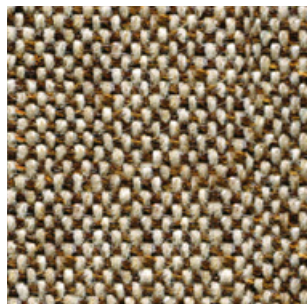
35



36



12



23



16



28

INCLASS

# G4 - CONNECT <sup>NEW</sup>

By Gabriel

## TECHNICAL DATA

### Composition:

48% wool, 41% recycled polyester, 9% polyamide, 2% polyester.

### Light fastness:

5 - 7, ISO 105 B02.

### Abrasion:

90,000 Martindale EN ISO 12947-2.

### Resistance to pilling:

4 - 5, ISO 12945-2.

### Fastness to rubbing:

Wet 4 - 5.

Dry 4 - 5, ISO 105 X12.

### Flammability:

EN 1021 - 1 (cigarette).

EN 1021 - 2 (match).

BS 5852 Crib 5.

CA TB 117-2013.

Class Uno UNI 9175 Class 1 I EMME.

### Environment:

Oeko-Tex® standard 100.

Complies with EU Ecolabel.

Width: 140cm

Weight: 370gr/m<sup>2</sup>



\*\*\*Batch to batch variations may occur within commercial tolerances.

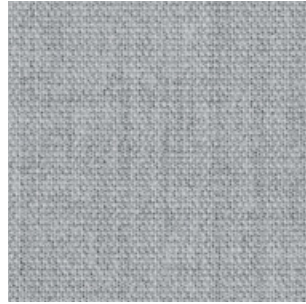


**41%**  
recycled material  
Post Consumer  
Recycled  
Polyester

### Note:

- The real colours and tones of the fabrics may differ from the digital image due to the scan process and the colour calibration of the different screens. Always request real fabric samples before ordering.
- Consult our Fabric and Leather Matrix to know about the availability of this material by product line.

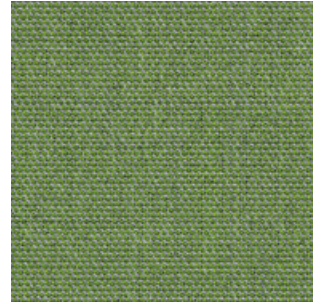




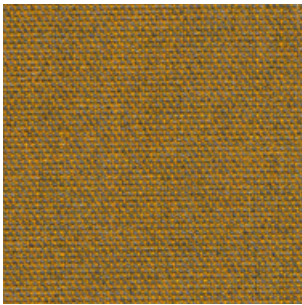
60147



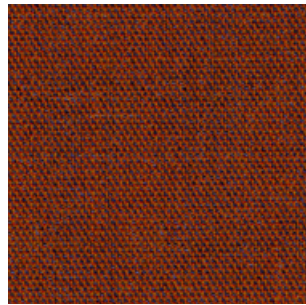
61208



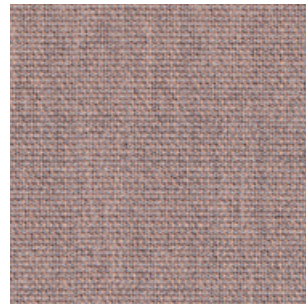
68229



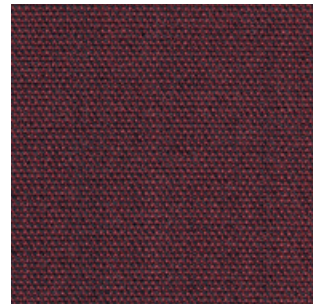
62109



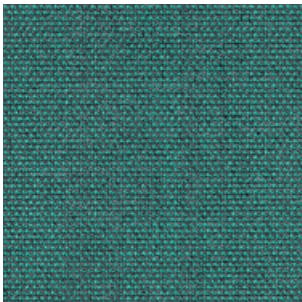
63107



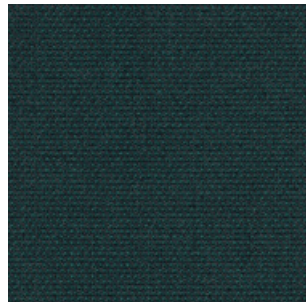
64229



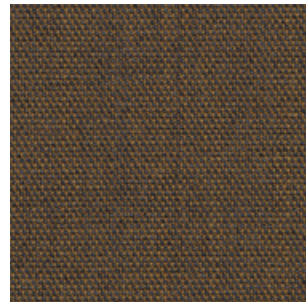
64230



67113



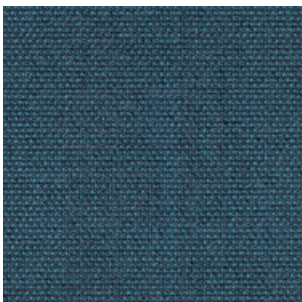
67115



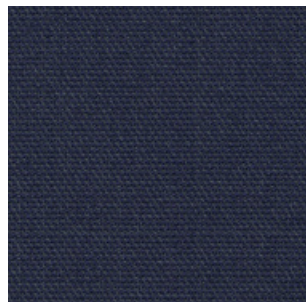
61209



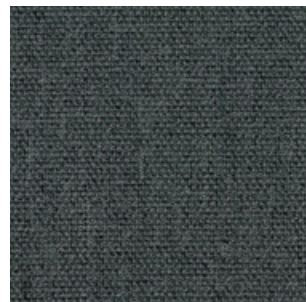
61210



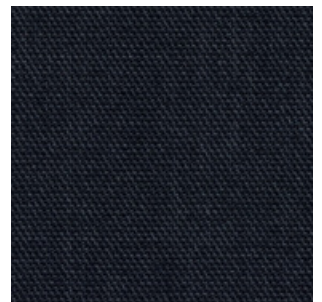
66205



65127



60152



60999

INCLASS

# G4 - VALENCIA

By Spradling

## TECHNICAL DATA

### Composition:

Topcoat: 100% Vinyl.

Backing: 100% Polyester Hi-Loft<sup>2TM</sup>.

### Light fastness:

1000 hours, XENOTEST DIN 54004/NTC 1479.

### Abrasion:

300.000 cycles de Martindale EN ISO 12947:1999 Part 2.

### Cold crack resistance:

-23°C.

### Characteristics:

Antimicrobial protection.

Anibacterial protection.

Antimycotic protection.

### Flammability:

EU: EN 1021 Part 1 y 2.

ES: UNE 23.727-90 1R/M.2.

FR: NF P 92-503/M2.

DE: DIN 4102 B2.

IT: UNI 9175 (1987) / UNI 9175/FA1 (1994) Classe 1.IM (UNO I EMME).

AT: ÖNORM B 3825, Gruppe 1 - Schwerbrennbares Verhalten.

AT: ÖNORM A 3800 Teil 1, Qualmbildungsklasse Q1 - schwachqualmend.

IMO FTP 2010 Code MSC.307 (88) Part 8 3.1 & 3.2.

US: FMVSS 302.

US: FAR 25/853.

(MED) Marine Equipment Directive.

ECE R118.02 (replaces Directive 95/28/CE Annexes 6, 7 & 8.

EN 71-2:2006+A1:2007 - Toy safety - Parte 2: Inflammability.

**Width:** 140cm

**Weight:** 685gr/m<sup>2</sup>



\*\*\*Batch to batch variations may occur within commercial tolerances.



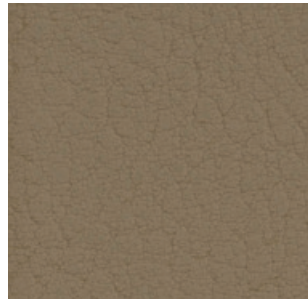
**PERMABLOK®**  
ADVANCED VINYL PROTECTION

### Note:

- The real colours and tones of the fabrics may differ from the digital image due to the scan process and the colour calibration of the different screens. Always request real fabric samples before ordering.

- Consult our Fabric and Leather Matrix to know about the availability of this material by product line.





2117



0002



2114



2111



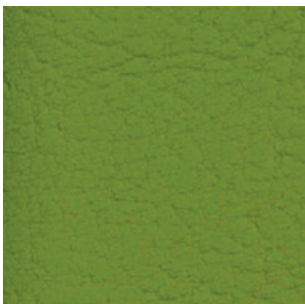
2116



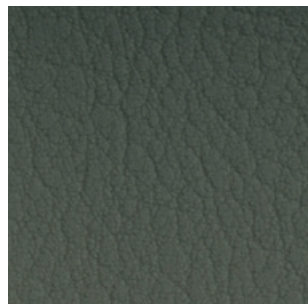
0035



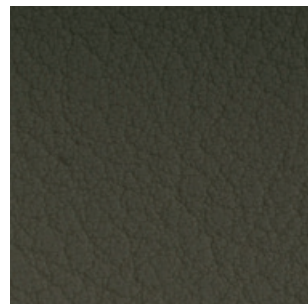
2074



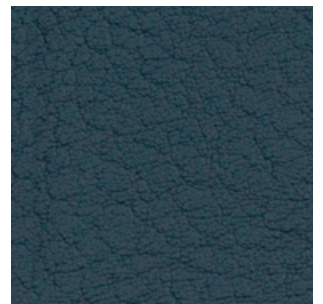
2110



4002



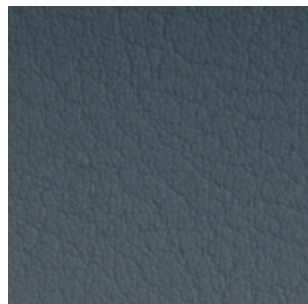
4001



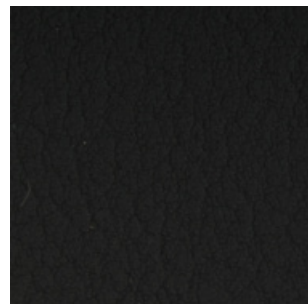
5065



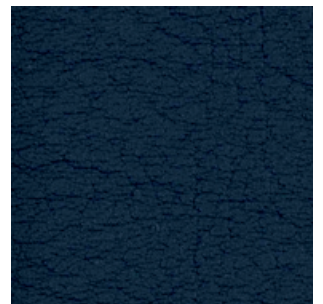
4040



4045



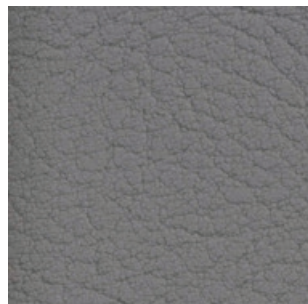
4003



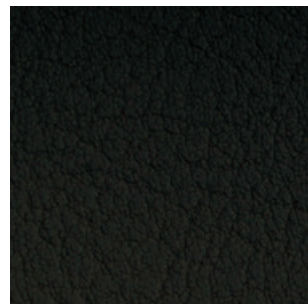
2108



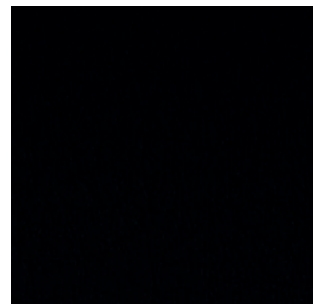
8032



4044



4041



9035

INCLASS

# G4 - STEP

By Gabriel

## TECHNICAL DATA

### Composition:

100% trevira CS.

### Light fastness:

5 - 7, ISO 105 B02.

### Abrasion:

100.000 Martindale EN ISO 12947.

### Resistance to pilling:

4 - 5, ISO 12945-2.

### Fastness to rubbing:

Wet 4 - 5. - Dry 4 - 5, ISO 105 X12.

### Flammability:

IMO MSC 307(88) Annex 1 part 8.

MED.

Certificate IMO.

DIN 4102 B1.

NFP 92-503/504/505 M1.

BS EN 1021 1&2 Cigarette and Match.

BS EN 1021-1 Cigarette.

BS 5852 Part 1 0,1 Cigarette and Match.

BS 5852 Crib 5.

ÖNORM B 3825-B1-3800-Q1 UK.

FAR/JAR 25.853 (a) (i) (ii).

BS 7176 Medium hazard.

AM 18 - NF D 60-013-(only for fabric).

CA TB 117-2013.

Class Uno UNI 9175 Class 1 I EMME.

DIN EN 13501-1 B-s1,d0.

### Environment:

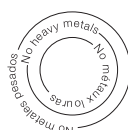
Oeko-Tex - EU Ecolabel - 100% free of heavy metals.

Width: 140cm

Weight: 470gr/m<sup>2</sup>



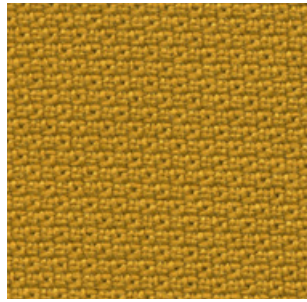
\*\*\*Batch to batch variations may occur within commercial tolerances.



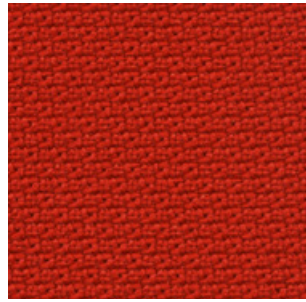
### Note:

- The real colours and tones of the fabrics may differ from the digital image due to the scan process and the colour calibration of the different screens. Always request real fabric samples before ordering.
- Consult our Fabric and Leather Matrix to know about the availability of this material by product line.

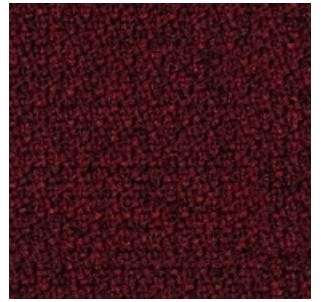




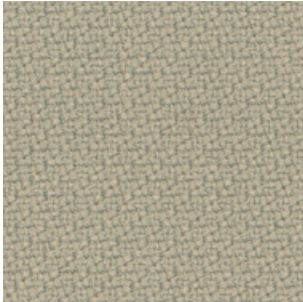
2440 - 62057



2440 - 63012



2442 - 64159



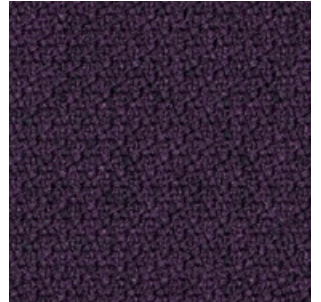
2440 - 61149



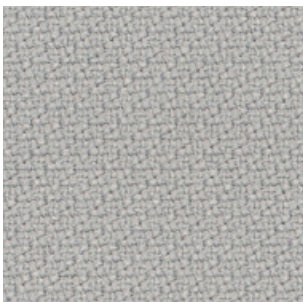
2442 - 61103



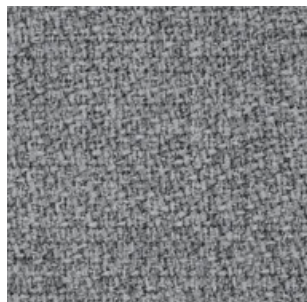
2440 - 61150



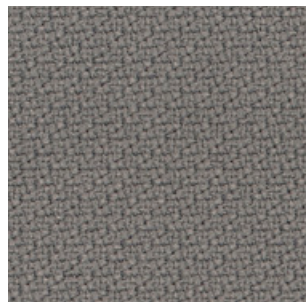
2442 - 65047



2440 - 60004



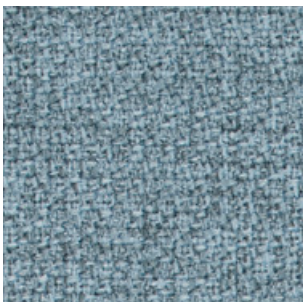
2441 - 60004



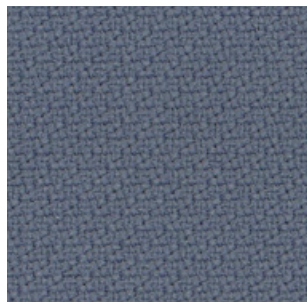
2440 - 60011



2442 - 60011



2441 - 67004



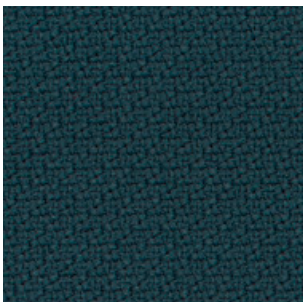
2440 - 66152



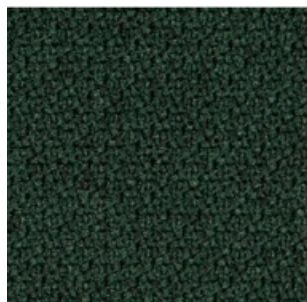
2442 - 66152



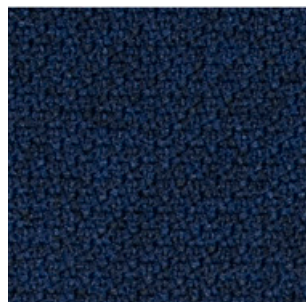
2442 - 66019



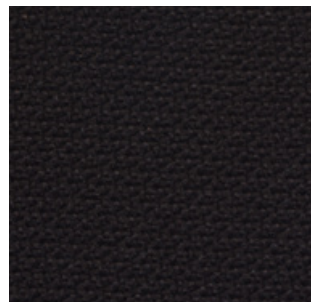
2440 - 68158



2442 - 68121



2442 - 65011



2440 - 60999

INCLASS

# G4 - VELVET MESH <sup>NEW</sup>

## TECHNICAL DATA

**Composition:**

60% PA - 40% PL

**Light fastness:**

6 - Tolerance 5 to 8.  
(Blue scale) - Xenotest  
UNI EN ISO 105-B02.

**Abrasion:**

120.000 Martindale, EN ISO 12947-2.

**Resistance to pilling:**

5 - Tolerance 4 to 5. EN ISO 12945-2.

**Dye fastness to rubbing:**

4/5 - Tolerance 4 to 5. UNE-EN ISO 105-X12.

**Inflamability:**

UNE EN 1021-1.  
CAL TB 117.

\*Flammability performance is dependent on foam and glue used.

**Width:** ±140cm

**Weight:** ±260gr/m<sup>2</sup>

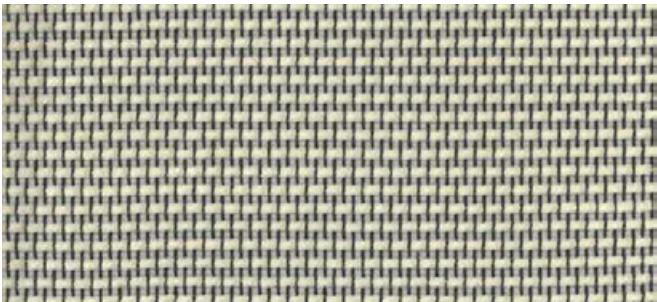


\*\*\*Batch to batch variations may occur within commercial tolerances.

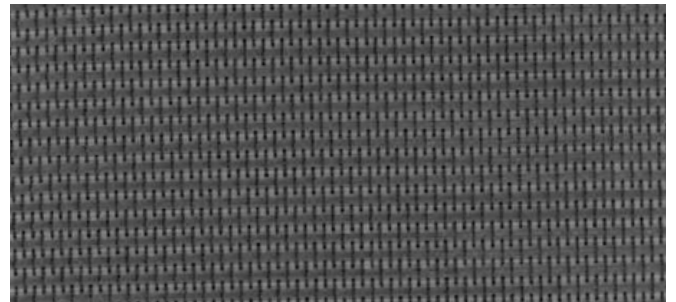
**Note:**

- The real colours and tones of the fabrics may differ from the digital image due to the scan process and the colour calibration of the different screens. Always request real fabric samples before ordering.
- Consult our Fabric and Leather Matrix to know about the availability of this material by product line.





1069



8007



8027



8033

INCLASS

# G4 - MAXI <sup>NEW</sup>

3D MESH

## TECHNICAL DATA

**Composition:**

100% recyclable polyamide.

**Lightfastness:**

≥5, ISO 105-B02.

**Abrasion:**

50.000 Martindale, EN ISO 12947-2.

**Breaking strength:**

Warp N 990 ±5%.

Weft N 439 ±5%, EN ISO 13934-1.

**Resistance to pilling:**

≥4/5, EN ISO 12945-2.

**Dye fastness to rubbing:**

≥4/5, UNE-EN ISO 105-X12.

**Width:** ±140cm

**Weight:** ±550gr/m<sup>2</sup>

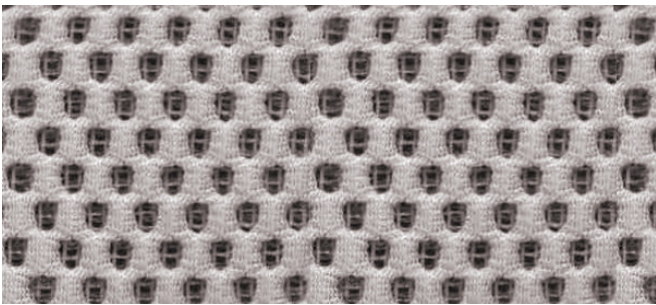


\*\*\*Batch to batch variations may occur within commercial tolerances.

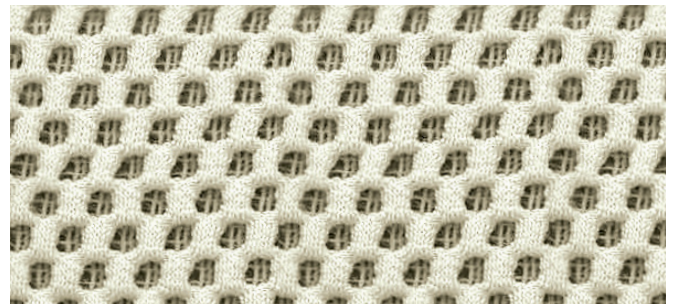
**Note:**

- The real colours and tones of the fabrics may differ from the digital image due to the scan process and the colour calibration of the different screens. Always request real fabric samples before ordering.
- Consult our Fabric and Leather Matrix to know about the availability of this material by product line.

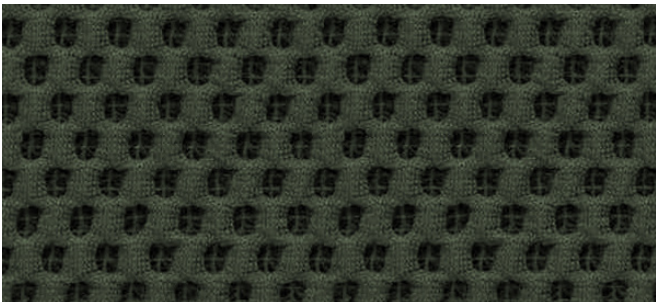




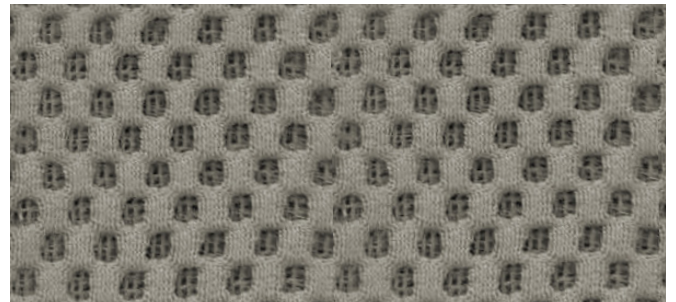
418



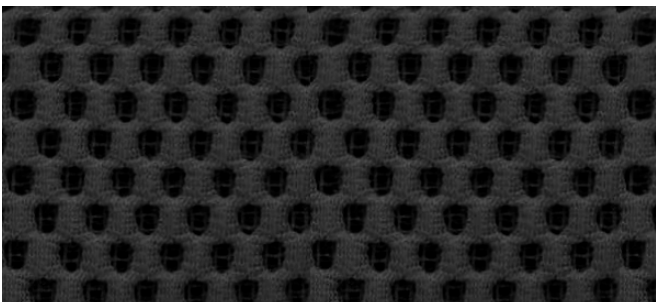
423



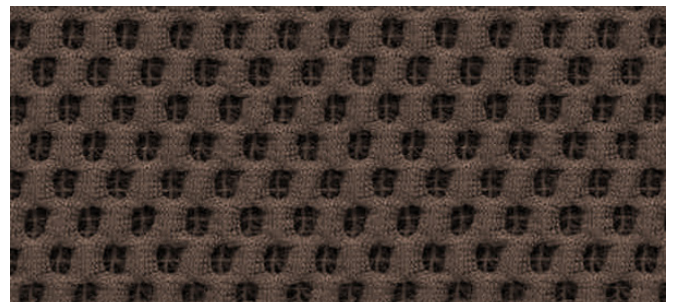
405



409



406



402

INCLASS

# G5 - DOLCE<sup>NEW</sup>

By Spradling

## TECHNICAL DATA

### Composition:

Topcoat: 100% polyurethane.

Backing: 100% rayon.

### Light fastness:

40 hours, XENOTEST DIN 54004/NTC 1479.

### Abrasion:

≥300.000 Martindale EN ISO 12947:1999 Part 2.

### Cold crack resistance:

-23°C.

### Characteristics:

Antibacterial protection.

### Flammability:

EU: EN 1021 Part 1 y 2

US: FMVSS 302

UK: BS 5852 Part 2 CRIB 5

IMO FTP 2010 Code MSC.307 (88) Part 8 3.1 & 3.2.

**Width:** 140cm

**Weight:** 685gr/m<sup>2</sup>



\*\*\*Batch to batch variations may occur within commercial tolerances.

### Note:

- The real colours and tones of the fabrics may differ from the digital image due to the scan process and the colour calibration of the different screens. Always request real fabric samples before ordering.

- Consult our Fabric and Leather Matrix to know about the availability of this material by product line.





6703



6706



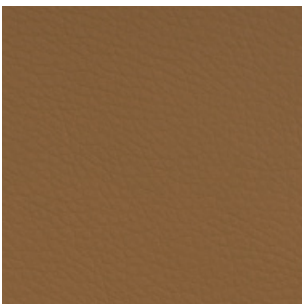
6708



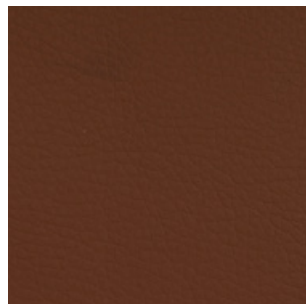
6719



6714



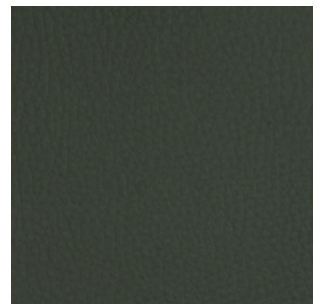
6709



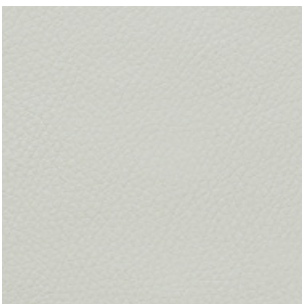
6711



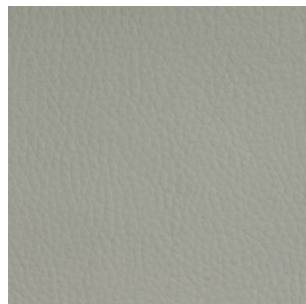
6712



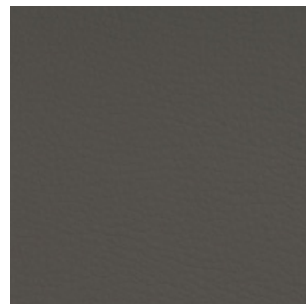
6717



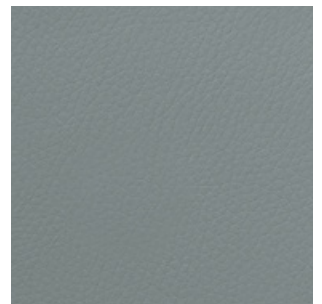
6729



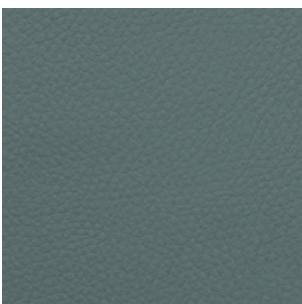
6726



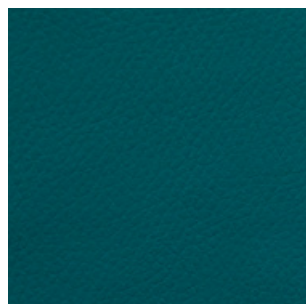
6727



6736



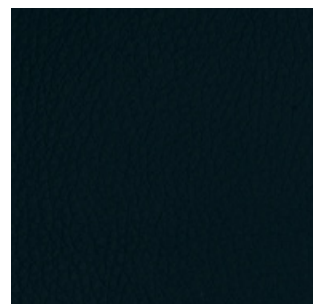
6735



6734



6724



6728

INCLASS

# G5 - SYNERGY<sup>NEW</sup>

By Camira

## TECHNICAL DATA

**Composition:**

95% virgin wool, 5% polyamide.

**Light fastness:**

5, ISO 105-B02.

**Abrasion:**

≥100.000 Martindale EN ISO 12947.

**Fastness to rubbing:**

Wet 4.

Dry 4, ISO 105 X12.

**Flammability:**

EN 1021 - 1 (cigarette).

EN 1021 - 2 (match).

BS 7176 Low Hazard.

NF D 60-013.

ÖNORM B 3825 & A 3800-1 (sobre 58kg/m<sup>3</sup> Foam CMHR).

UNI 9175 Classe 1 IM.

EN 13501-1 Adhered Class D, s1, d0.

EN 13501-1 Un-adhered Class E, s2, d0.

IMO FTP Code (Part 8).

**Environment:**

Complies with EU Ecolabel.

Certificate Indoor Advantage™ Gold.

**Width:** 140cm

**Weight:** 400gr/m<sup>2</sup>



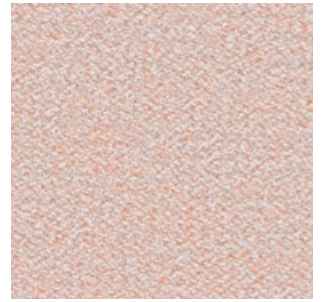
\*\*\*Batch to batch variations may occur within commercial tolerances.



**Note:**

- The real colours and tones of the fabrics may differ from the digital image due to the scan process and the colour calibration of the different screens. Always request real fabric samples before ordering.
- Consult our Fabric and Leather Matrix to know about the availability of this material by product line.





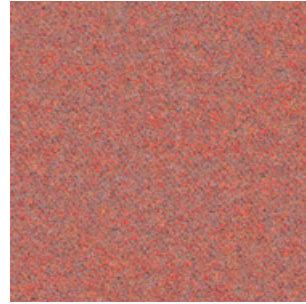
74



45



43



73



84



32



22



37



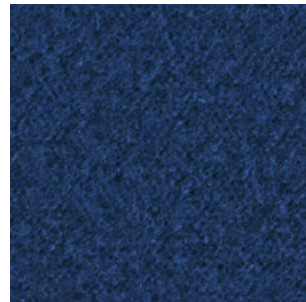
34



49



59



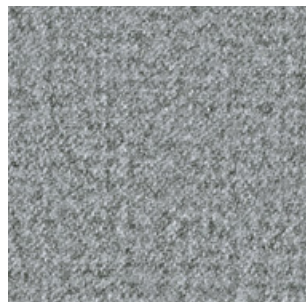
62



41



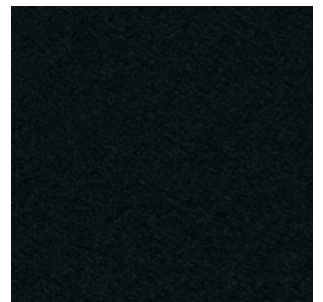
8



16



17



27

INCLASS

# G5 - REMIX

By Kvadrat

## TECHNICAL DATA

**Designer:**

Giulio Ridolfo.

**Composition:**

90% new wool, 10% nylon.

**Light fastness:**

5 - 7, ISO 105-B02.

**Abrasion:**

100.000 Martindale EN ISO 12947.

**Resistance to pilling:**

4, EN ISO 12945.

**Flammability:**

AS/NZS 1530.3.

BS 5852 part 1.

EN 1021-1/2.

IMO FTP Code 2010: Part 8.

NF D 60 013.

NFPA 260.

Önorm B1/Q1.

UNI 9175 1IM.

US Cal. Bull. 117-2013.

**Environment:**

Complies with EU ecolabel "The Flower".

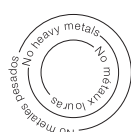
100% free of heavy metals.

**Width:** 140cm

**Weight:** 415gr/m<sup>2</sup>



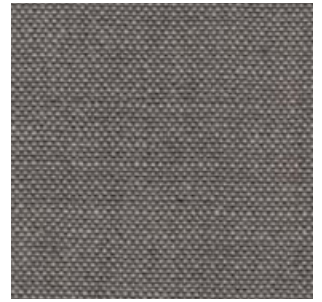
\*\*\*Batch to batch variations may occur within commercial tolerances.



**Note:**

- The real colours and tones of the fabrics may differ from the digital image due to the scan process and the colour calibration of the different screens. Always request real fabric samples before ordering.
- Consult our Fabric and Leather Matrix to know about the availability of this material by product line.





136



433



452



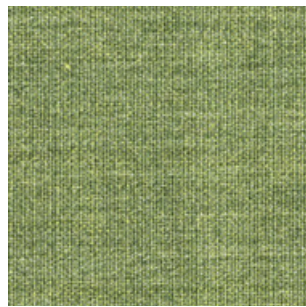
346



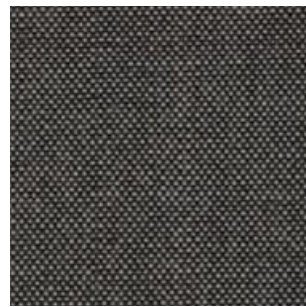
653



326



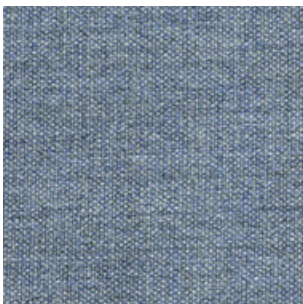
933



152



356



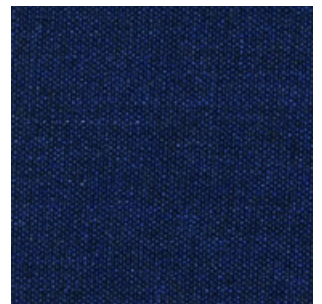
733



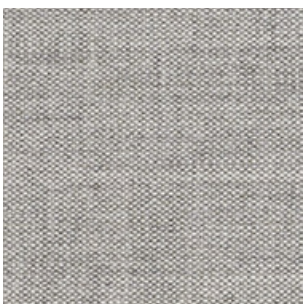
743



266



773



123



143



163



183

INCLASS

# G5 - CANVAS

By Kvadrat

## TECHNICAL DATA

**Designer:**

Giulio Ridolfo.

**Composition:**

90% new wool, 10% nylon.

**Light fastness:**

5 - 7, ISO 105-B02.

**Abrasion:**

100.000 Martindale EN ISO 12947.

**Resistance to pilling:**

4 - 5, EN ISO 12945.

**Flammability:**

AS/NZS 1530.3.

BS 5852 Crib 5 when flameprotected.

BS 5852, ignition source 3.

BS 5852 part 1.

DIN 4102 B2.

IMO FTP Code 2010: Part 8.

NF D 60 013.

NFPA 260.

Önorm B1/Q1.

UNI 9175 1IM.

US Cal. Bull. 117-2013.

**Environment:**

Complies with EU ecolabel "The Flower".

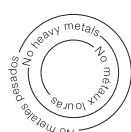
100% free of heavy metals.

**Width:** 140cm

**Weight:** 480gr/m<sup>2</sup>.



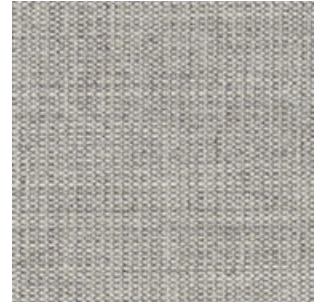
\*\*\*Batch to batch variations may occur within commercial tolerances.



**Note:**

- The real colours and tones of the fabrics may differ from the digital image due to the scan process and the colour calibration of the different screens. Always request real fabric samples before ordering.
- Consult our Fabric and Leather Matrix to know about the availability of this material by product line.

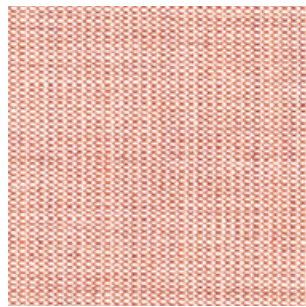




124



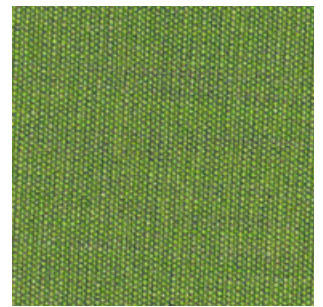
244



614



654



954



964



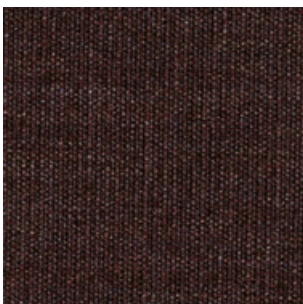
454



424



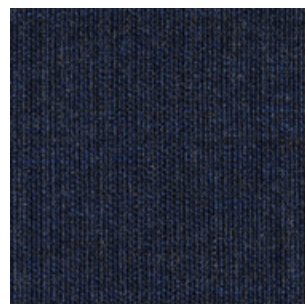
264



364



684



794



174

INCLASS

# G6 - STEELCUT TRIO

By Kvadrat

## TECHNICAL DATA

**Designer:**

Frans Dijkmeijer and Giulio Ridolfo.

**Composition:**

90% new wool, 10% nylon.

**Light fastness:**

5 - 7 ISO 105-B02.

**Abrasion:**

100.000 Martindale EN ISO 12947.

**Resistance to pilling:**

4, EN ISO 12945.

**Flammability:**

AS/NZS 1530.3

AS/NZS 3837 class 2.

BS 5852 part 1.

DIN 4102 B2.

EN 1021-1/2.

IMO FTP Code 2010: Part 8.

NF D 60 013.

NFPA 260.

Önorm B1/Q1.

UNI 9175 1IM.

US Cal. Bull. 117-2013.

**Environment:**

Complies with EU ecolabel "The Flower".

100% free of heavy metals.

**Width:** 140cm

**Weight:** 770gr/m<sup>2</sup>



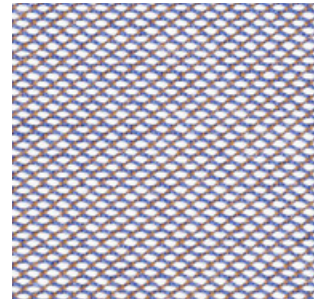
\*\*\*Batch to batch variations may occur within commercial tolerances.



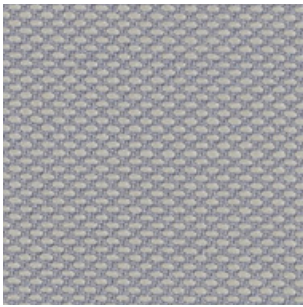
**Note:**

- The real colours and tones of the fabrics may differ from the digital image due to the scan process and the colour calibration of the different screens. Always request real fabric samples before ordering.
- Consult our Fabric and Leather Matrix to know about the availability of this material by product line.

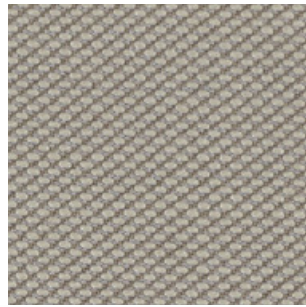




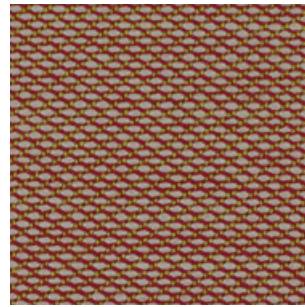
806



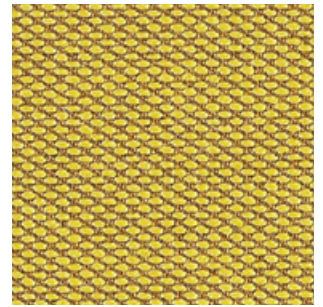
105



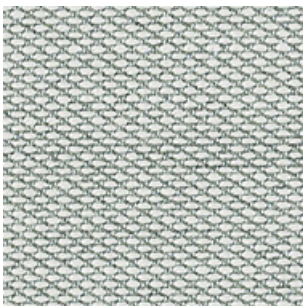
205



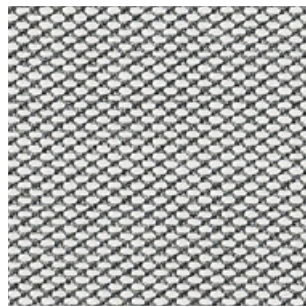
515



453



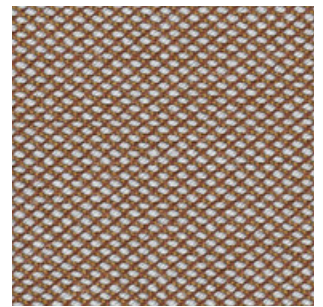
113



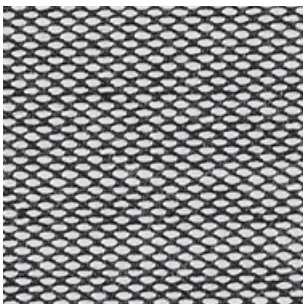
133



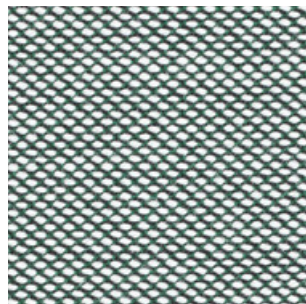
236



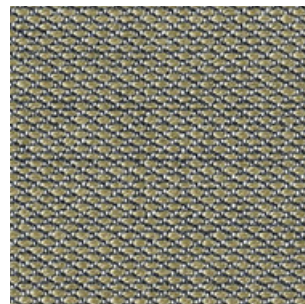
476



124



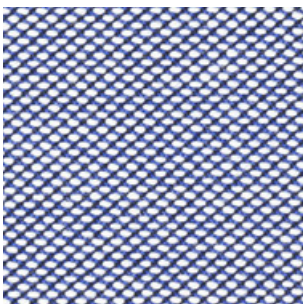
916



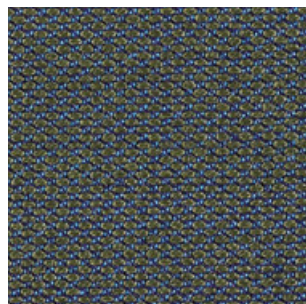
253



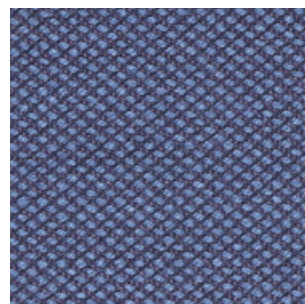
645



716



883



796



383

INCLASS

# G6 - FIORD

By Kvadrat

## TECHNICAL DATA

**Designer:**

Louise Sigvardt & Tone Barnung.

**Composition:**

92% new wool, 8% nylon.

**Light fastness:**

5 - 7, ISO 105-B02.

**Abrasion:**

60.000 Martindale EN ISO 12947.

**Resistance to pilling:**

4 - 5, EN ISO 12945.

**Flammability:**

AS/NZS 3837 class 2.

ASTM E84 Class A Adhered.

ASTM E84 Class A Unadhered.

BS 5852 part 1.

EN 1021-1/2.

IMO FTP Code 2010:Part 8.

NF D 60 013.

NFPA 260

ÖNORM B1/Q1

UNI 9175 1IM.

US Cal. Bull. 117-2013.

**Environment:**

Complies with EU ecolabel "The Flower"

100% free of heavy metals.

**Width:** 140cm

**Weight:** 500gr/m<sup>2</sup>



\*\*\*Batch to batch variations may occur within commercial tolerances.



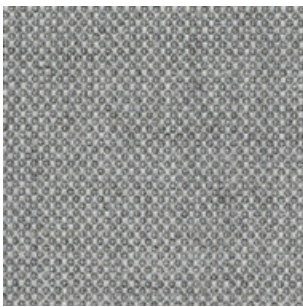
**Note:**

- The real colours and tones of the fabrics may differ from the digital image due to the scan process and the colour calibration of the different screens. Always request real fabric samples before ordering.
- Consult our Fabric and Leather Matrix to know about the availability of this material by product line.

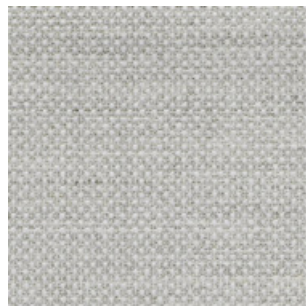




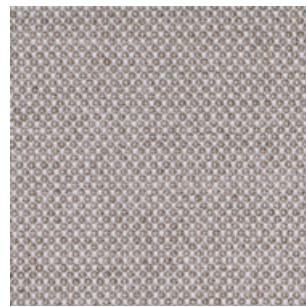
271



151



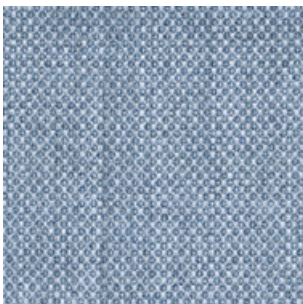
121



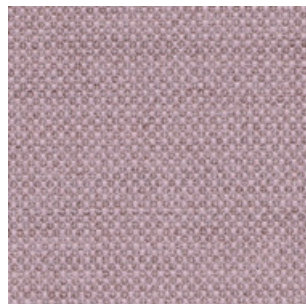
251



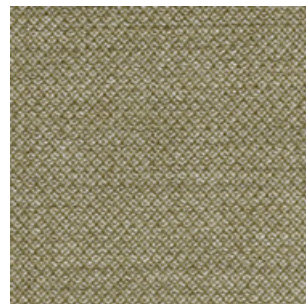
451



751



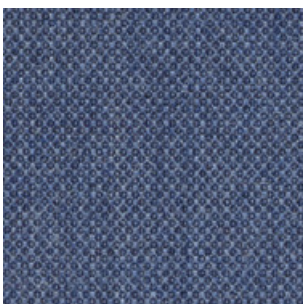
551



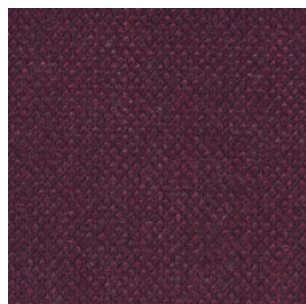
951



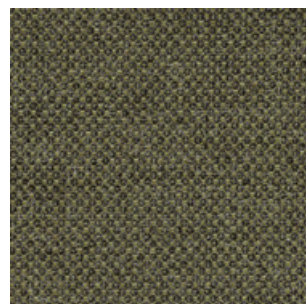
371



771



591



961



191

INCLASS

# G7 - HALLINGDAL

By Kvadrat

## TECHNICAL DATA

**Designer:**

Nanna Ditzel.

**Composition:**

70% new wool, 30% viscose.

**Light fastness:**

5 - 7 ISO 105-B02.

**Abrasion:**

100.000 Martindale EN ISO 12947.

**Resistance to pilling:**

3, EN ISO 12945.

**Flammability:**

AS/NZS 1530.3.

AS/NZS 3837.

BS 5852 Crib 5.

BS5852 part 1.

DIN 4102 B2.

EN 1021-1/2.

IMO FTP Code 2010: Part 8.

NF D 60 013.

NFPA 260.

Önorm B1/Q1.

UNI 9175 1IM.

US Cal. Bull. 117 - 2013.

**Environment:**

Complies with EU ecolabel "The Flower".

**Width:** 140cm

**Weight:** 795gr/m<sup>2</sup>



\*\*\*Batch to batch variations may occur within commercial tolerances.



**Note:**

- The real colours and tones of the fabrics may differ from the digital image due to the scan process and the colour calibration of the different screens. Always request real fabric samples before ordering.
- Consult our Fabric and Leather Matrix to know about the availability of this material by product line.

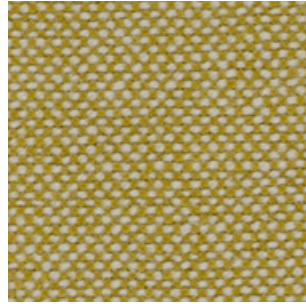




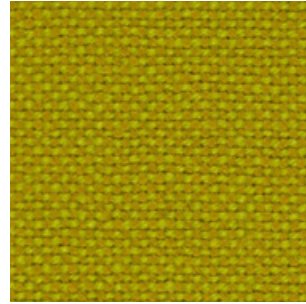
687



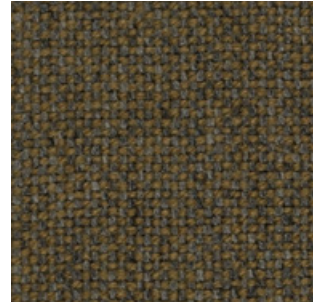
200



407



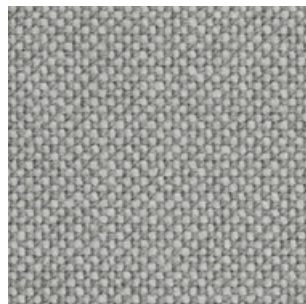
420



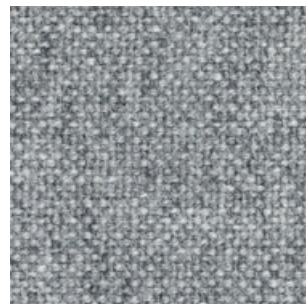
227



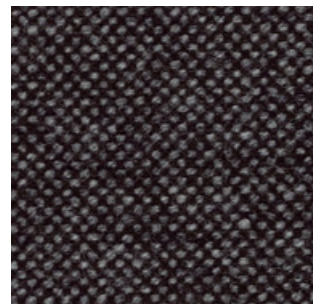
100



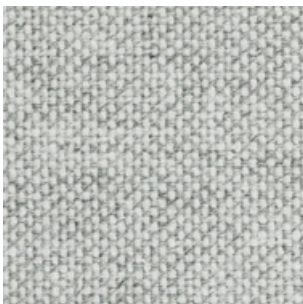
123



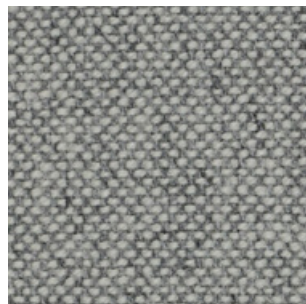
130



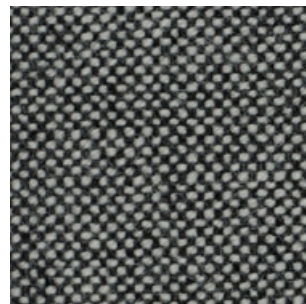
368



110



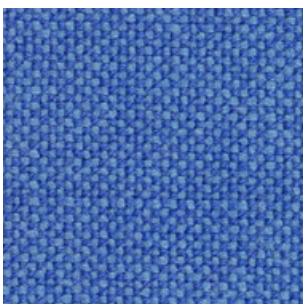
116



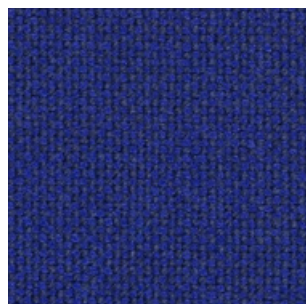
126



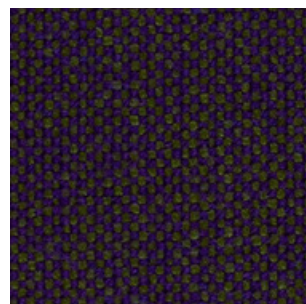
180



733



773



968



376

# G10 - LEATHER

## TECHNICAL DATA

**Composition:**

Cow leather.

**Light fastness:**

≥4/5, UNI EN ISO 105B02.

**Fastness to rubbing:**

Wet ≥4 (150 cycles).

Dry ≥4 (500 cycles).

Perspiration ≥4 (80 cycles), UNI EN ISO 11640: 1998 - 11641 (pH8).

**Tear strength:**

>20N, EN ISO 3377-1.

**Determination of PH:**

>3,5, EN ISO 4045.

**Adhesion of the finish:**

≥2, UNI EN ISO 11644.

**Determination of dry ex resistance:**

Without damage, UNI EN ISO 5402.

**Flammability:**

Ignition source 0 (cigarette).

Ignition source 1 (match).

BS 5852-1979.

BS EN 1021-1-2:2006.

**Thickness:**

0,9 - 1,1mm

**Average surface:**

4,8 - 5,0m<sup>2</sup>

**Maintenance:**

Wash with neutral soap and water or with a cleaning product for leather.

\*\*\*Batch to batch variations may occur within commercial tolerances.

Note:

- The real colours and tones of the fabrics may differ from the digital image due to the scan process and the colour calibration of the different screens. Always request a real leather sample before ordering.

- Consult our Fabric and Leather Matrix to know about the availability of this material by product line.





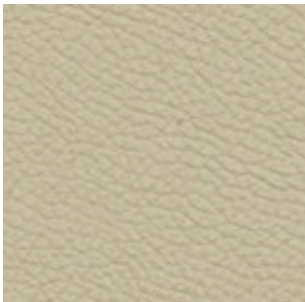
207



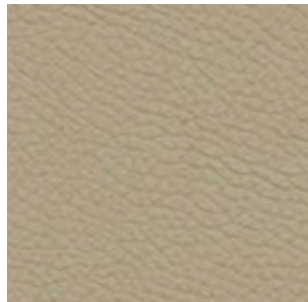
214



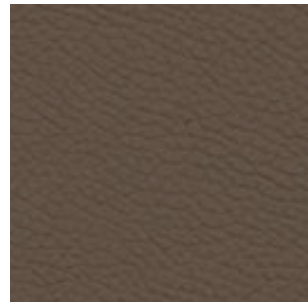
218



224



201



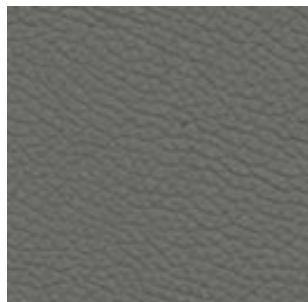
216



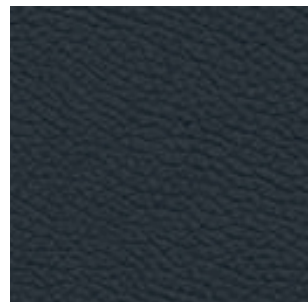
203



219



208



209



204

# G11 - LEATHER

## TECHNICAL DATA

**Composition:**

Cow leather.

**Light fastness:**

≥5, UNI EN ISO 105B02.

**Fastness to rubbing:**

Wet ≥4 (80 cycles).

Dry ≥4 (500 cycles).

Perspiration ≥4 (50 cycles), UNI EN ISO 11640 - 11641.

**Tear strength:**

≥20N, EN ISO 3377-1.

**Determination of PH:**

≥3,5 ≤0,7 EN ISO 4045.

**Adhesion of the finish:**

≥2,5N / 10mm, UNI EN ISO 11644.

**Determination of dry flex resistance:**

>50.000 cycles, UNI EN ISO 5402-1.

**Flammability:**

Ignition source 0 (cigarette)

Ignition source 1 (match), BS 5852-1:79.

**Thickness:**

0,9 - 1,1mm

**Average surface:**

4,8 - 5,0m<sup>2</sup>

**Maintenance:**

Wash with neutral soap and water or with a cleaning product for leather.

\*\*\*Batch to batch variations may occur within commercial tolerances.

Note:

- The real colours and tones of the fabrics may differ from the digital image due to the scan process and the colour calibration of the different screens. Always request a real leather sample before ordering.

- Consult our Fabric and Leather Matrix to know about the availability of this material by product line.





333



348



346



320



331



332



344



324



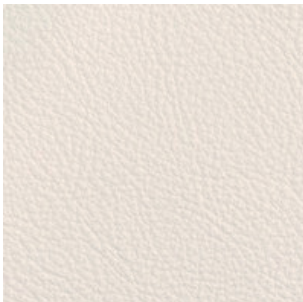
362



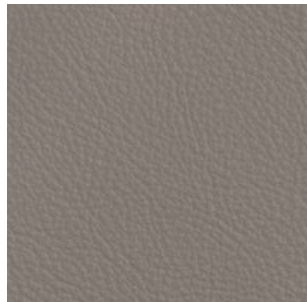
375



326



317



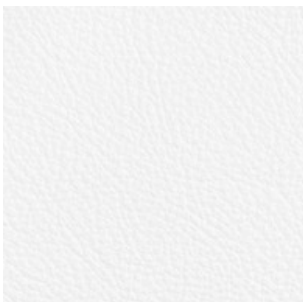
321



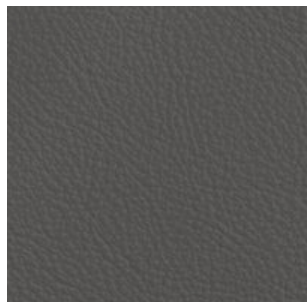
325



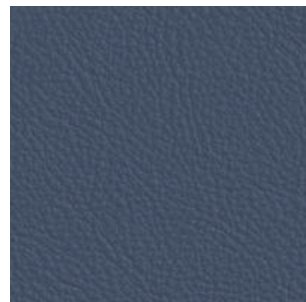
328



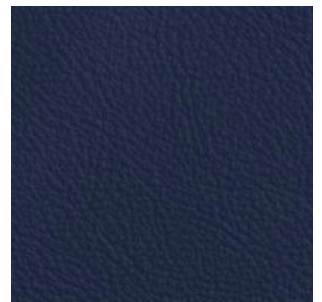
311



322



357



358

INCLASS

# METAL PAINT & FINISHES

INCLASS powder coats all painted metal components for a durable finish eliminating VOC's (volatile organic compounds) from being released into the environment. The result is a finish that is abrasion and impact resistant.

We offer a wide palette of metal finishes that are priced by grades. M1 colours, M2 colours and chrome.





# METAL PAINT MATRIX BY COLLECTION

	ALTEA	ANN	ARC	ARUM	ARYN	ARYN MAX	ARYN WOOD	BINAR 60	BINAR EXECUTIVE	DIVIDERS / SCREENS	DUNAS LOUNGE	DUNAS XL	DUNAS XS	ELIX	ENTROPY	ESCALAS	ESITT	FLAT	ITEK PRO	KORI	LAMINAR	
<b>METAL FINISHES</b>																						
M1 Colours	•	•	•	•	•	•	•	•	○	•	•	•	•	•	•	•	○	•	○	○	•	
M2 Colours	•	•	•	•	•	•	•	○	-	○	•	•	•	•	•	•	-	•	-	-	•	
Chrome	•	•	•	•	•	•	•	○	-	-	-	○	•	-	-	-	-	•	-	-	-	



## LEGEND

- Not available
- Available
- See specifications

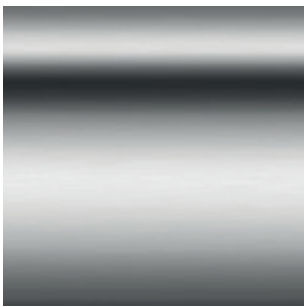
LAN	●	●	●
LAPSE	●	●	●
LEA	●	●	●
LEX	●	●	●
LIN TAPIZ	●	●	●
LIN WOOD	●	●	●
MALIBU	●	●	●
MARCUS	●	●	●
MILLENIUM	●	●	●
MOON	●	●	●
NIIM	●	●	●
NUME	●	●	●
PAU	●	●	●
PLANIA BENCH	●	●	●
PLANIA TABLE	●	●	●
SUI	●	●	●
SUN	●	●	●
TAIA	●	●	●
TAO	●	●	●
TEN	●	●	●
TETRIS	●	●	●
UNNIA	●	●	●
UNNIA TAPIZ	●	●	●
VARYA	●	●	●
VARYA TAPIZ	●	●	●
VARYA WOOD	●	●	●
XAIL	●	●	●

INCLASS

# METAL

SAMPLE CARD

CHROME



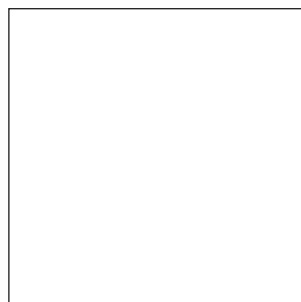
M1 COLOURS



B00



Aluminum



W01



## M2 COLOURS



M56



B40



B36



G49



M38



V74



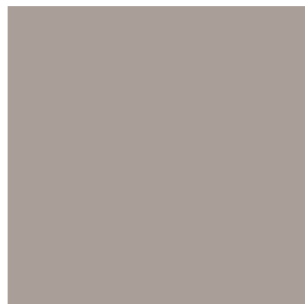
B44



G42



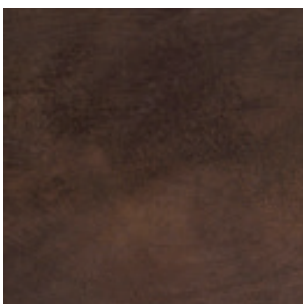
Y62



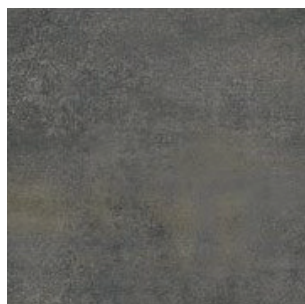
M82



P70



Rust Brown



Rust Grey

INCLASS

# WOOD

## VENEER / PAINTED WOOD

### VENEER / SOLID WOOD

Due to natural variations of the wood, finished products may vary from samples in colour, texture, and grain.

Wood parts may contain knots or grain patterns of different tones and are not homogeneous. This may lead to variations from one piece to another.

The wooden parts will darken and change tone with age and exposure to light.

All veneer and solid wood parts are finished with post-catalysed wood coatings, which provide exceptional durability and resistance.

### PAINTED WOOD

All painted wood parts are finished with post-catalysed wood coatings with a process of three layers. This process provides exceptional durability and resistance.

### BESPOKE WOOD FINISHES

Upon approval and with an upcharge, bespoke wood finishes are available. Contact our Customer Service for pricing and lead times.

Prior to approval, customer will send a sample for matching at least 6x6cm in surface dimension. Once received in our factory and approved, INCLASS will produce a matching sample following acknowledgement of the order. INCLASS will schedule the order for production only when the sample has been approved by the Customer.

Pantone® or RAL colour matches do not require approval and sample matching, but it may be requested by the Customers at a cost to be agreed with our Customer Service.

INCLASS may ask for payments in advance on bespoke finishes.





INCLASS

# WOOD MATRIX BY COLLECTION

WOOD FINISHES
Beech
Oak
Walnut
W1 Colours
W2 Colours



LEGEND

- Not available
- Available
- See specifications

ALTEA	-	●	-	-	-
ANN	●	●	●	●	●
ARC	●	●	●	●	●
ARYN WOOD	-	●	-	-	-
BINAR 60	-	●	-	-	-
DUNAS XL	-	●	-	-	-
DUNAS XS	-	●	-	-	-
ESCALAS	-	●	-	-	-
LAPSE	-	●	-	-	-
LEA	-	●	-	-	-
LIN WOOD	-	●	-	-	-
NIIM	●	●	-	-	-
PAU	●	-	-	-	-
PLANIA BENCH	-	●	-	-	-
PLANIA TABLE	-	●	-	-	-
STIKS	●	-	-	-	-
SUN	●	●	-	-	-
TAIA	-	●	-	-	-
TAO	●	●	-	-	-
UNNIA	-	●	-	-	-
UNNIA TAPIZ	-	●	-	-	-
VARYA	-	●	-	-	-
VARYA TAPIZ	-	●	-	-	-
VARYA WOOD	-	●	○	-	-
WUDI	-	●	-	-	-
XAIL	-	●	-	-	-

INCLASS

# WOOD

VENEER / SOLID WOOD



## BEECH



Natural Stain



Walnut Stain

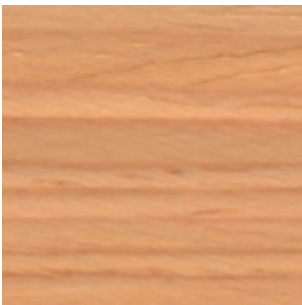


Wenge Stain

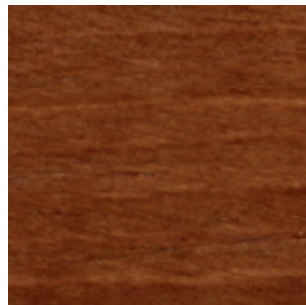


Black Stain

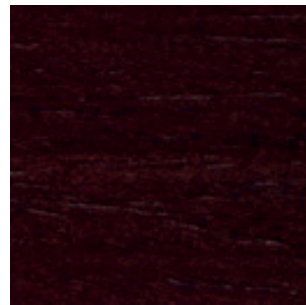
## OAK



Natural Stain



Walnut Stain



Wenge Stain



Black Stain

## WALNUT



Natural Stain

INCLASS

# WOOD

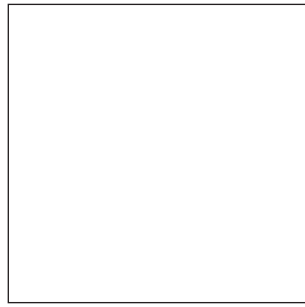
LACQUERED COLOURS



## W1 COLOURS



B00



W01

## W2 COLOURS



M56



B40



B36



G49



M38



V74



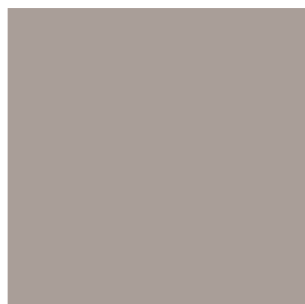
B44



G42



Y62



M82



P70

INCLASS

# POLYPROPYLENE

PP1 COLOURS









## LEGEND

- Not available
- Available
- See specifications

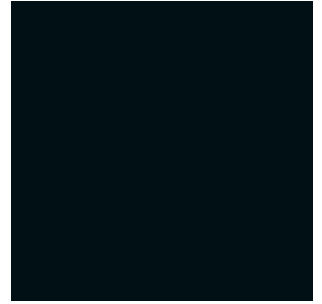
-	LAN
-	LAPSE
●	LEA
-	LEX
-	LIN TAPIZ
-	LIN WOOD
-	MALIBU
-	MARCUS
-	MOON
-	NIM
-	NUME
-	PAU
-	PLANIA BENCH
-	PLANIA TABLE
-	STELLA
-	STIKS
-	SUI
-	SUN
●	TAIA
-	TAO
-	TETRIS 2.0
●	UNNIA
-	UNNIA TAPIZ
●	VARYA
-	VARYA TAPIZ
-	VARYA WOOD
-	WUDI
-	XAIL

INCLASS

# POLYPROPYLENE

PP1 COLOURS





B00



M56



B40



B36



B44



M38



V16



V74



G42



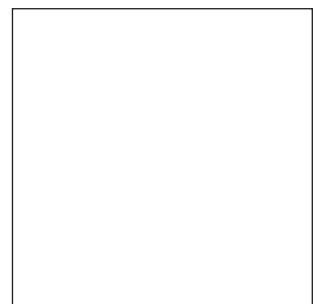
Y62



M82



P70



W01

INCLASS

# ROTOMOLDED POLYETHYLENE

Rotomolded polyethylene items are suitable for indoor and outdoor use.

Composed polyethylene colours may present surface irregularities that are intrinsic to these type of finishes. INCLASS will not accept returns due to this

Painted polyethylene colours are available in matt or gloss finish.  
Customer must specify.

Upon approval, the bases can also be painted with any of the RAL colours in matt or gloss finish. Contact Customer Service for lead time.

Upon approval other bespoke colours are also available. Contact our Customer Service for pricing and lead time.



770/771



ROTOMOLDED POLYETHYLENE

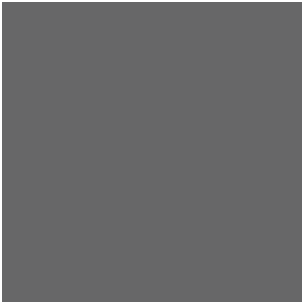
INCLASS

# ROTOMOLDED POLYETHYLENE

POLYETHYLENE COLOURS

772/773

## PE1 STANDARD COLOURS



G49 Anthracite



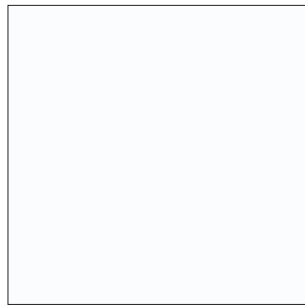
G42 Grey



M82 Stone

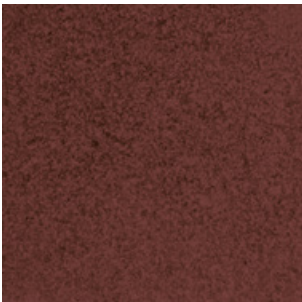


B00 Black

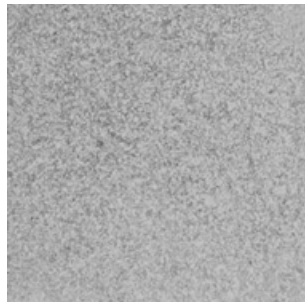


W01 White

## PE2 COMPOSED COLOURS



Rust Brown



Concrete

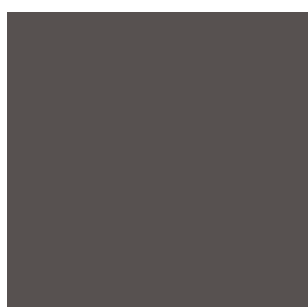


INCLASS

# ROTOMOLDED POLYETHYLENE

LACQUERED POLYETHYLENE COLOURS

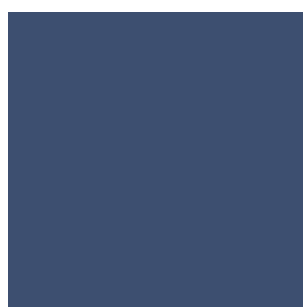
PE3 STANDARD PAINTED COLOURS



M56



B40



B36



B00



M38



V74



B44



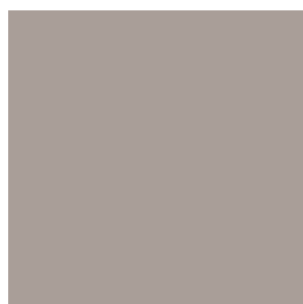
G49



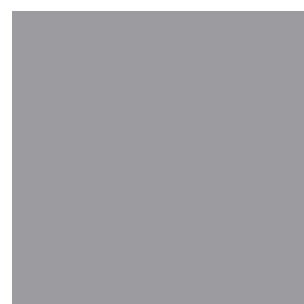
Y62



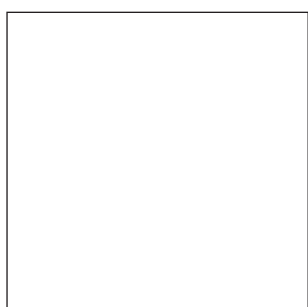
P70



M82



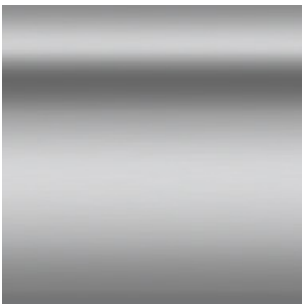
G42



W01

\*Standard in matt finish. Optionally available in gloss finish.

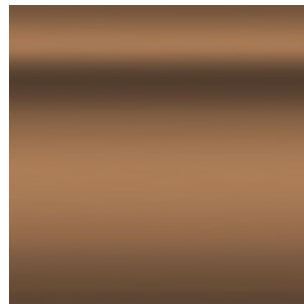
## PE4 METALLIC PAINTED COLOURS



Silver



Gold



Copper

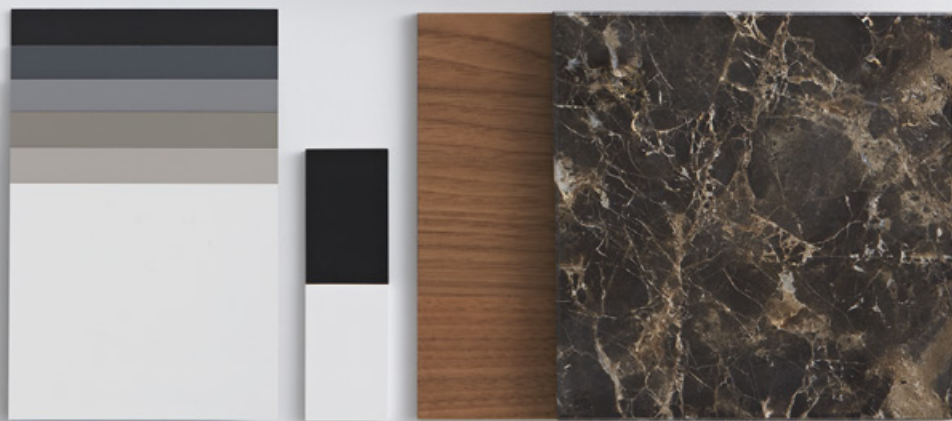
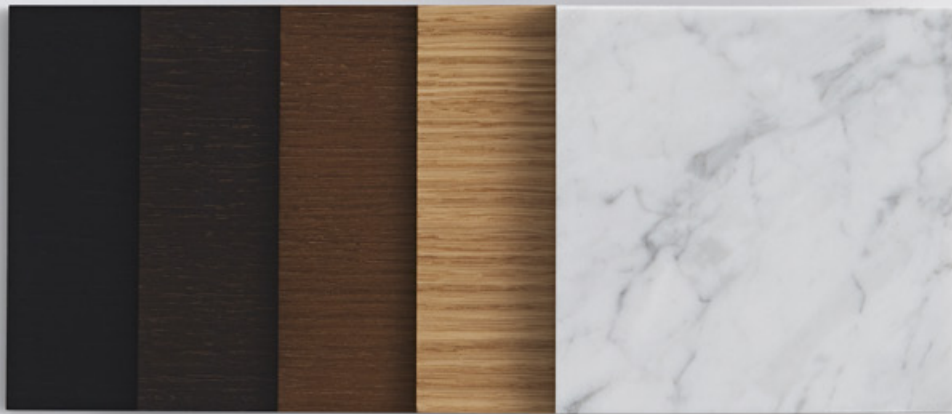
## PE5 BESPOKE PAINTED COLOURS

OPTIONALLY they can be finished in all the colours of the RAL sample card, both in gloss and matt.

INCLASS

# TABLE TOPS





# TABLE TOPS MATRIX BY COLLECTIONS

TABLE TOPS FINISHES	
Beech	•
Oak	•
Walnut	-
W1 colours	•
W2 colours	•
Solid Fenix®	-
Solid HPL, black core	-
Solid HPL, white core	-
Melamine	-





INCLASS

# TABLE TOPS

WOOD VENEER

MDF core with natural wood surface.

## BEECH



Natural Stain



Walnut Stain

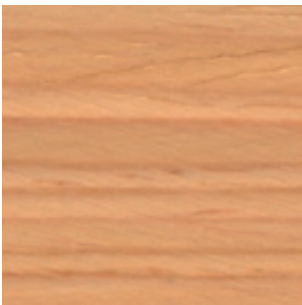


Wenge Stain

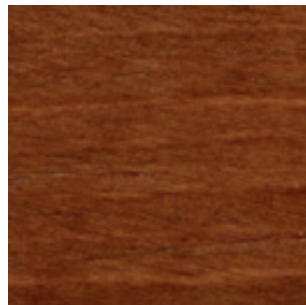


Black Stain

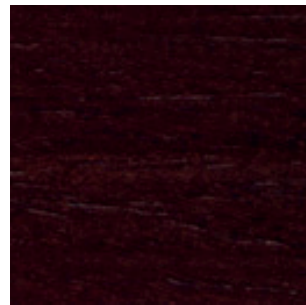
## OAK



Natural Stain



Walnut Stain



Wenge Stain



Black Stain

## WALNUT



Natural Stain

INCLASS

# TABLE TOPS

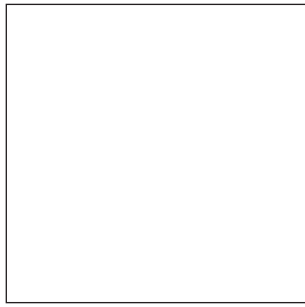
LACQUERED MDF



## W1 COLOURS



B00



W01

## W2 COLOURS



M56



B40



B36



G49



M38



V74



B44



G42



Y62



M82



P70

INCLASS

# TABLE TOPS

MISCELLANEOUS MATERIALS

SOLID FENIX®  
12mm

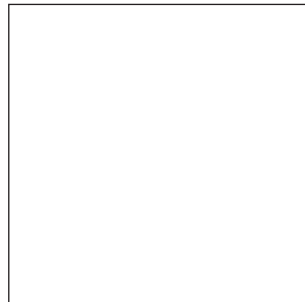


Black

SOLID HPL  
12mm black core

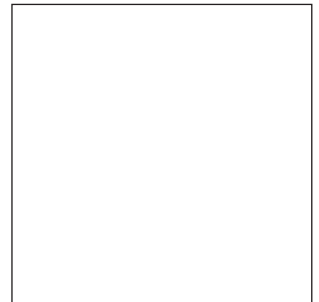


Black



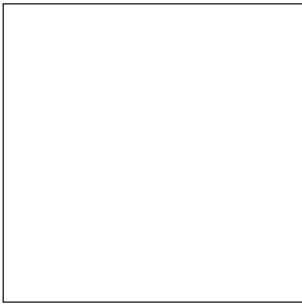
White

SOLID HPL  
12mm white core



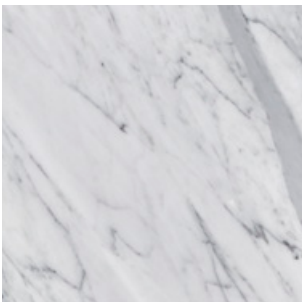
White

## MELAMINE



White

## NATURAL MARBLES



White carrara



Black marquina



Brown emperor



3.

# CARE AND MAINTENANCE

# CARE AND MAINTENANCE

## GLIDES

With continued use, the glides of the structures wear out. We recommend periodically checking its status. If they are worn, they must be replaced to avoid damage to the floor. INCLASS products fit standard plastic glides suitable for a wide variety of floor types. As an option, we offer the possibility of equipping your furniture with special glides for specific types of floors. If you have any questions, please ask our Customer Service department to find out the right type of glide suitable for your floor.

## UPHOLSTERY FABRICS

INCLASS offers a broad range of upholstery materials produced by renowned manufacturers.

Please consult the technical data, maintenance and cleaning recommendations indicated by the manufacturers of each fabric in our finishes book.

\* Important notice: INCLASS accepts no liability for users' stains or transfer of garment dyes to the furniture's fabric. This may occur especially with white or light coloured fabrics.

## NATURAL LEATHER

We recommend cleaning with a soft sponge or cloth dampened with warm water and neutral soap. Do not soak it excessively. Dry thoroughly with a cloth once you have finished cleaning. INCLASS can supply specific products for cleaning the natural leather.

## FAUX LEATHER

We recommend cleaning with a non-abrasive cloth or soft sponge dampened with warm water and neutral soap. Dry thoroughly with a cloth once you have finished cleaning. Avoid harsh detergents as they may cause hydrolysis and surface deterioration.

## WOOD SURFACES

In the case of stains, we recommend cleaning the surface with a non-abrasive cloth, warm water and neutral soap. Once finished cleaning, we recommend that you dry the surface thoroughly.

Alternatively, you may use specific cleaning products for wood surfaces.



## **METALLIC STRUCTURES**

In no case may abrasive sponges, fabrics or objects be used. Cleaning may be performed in the following ways:

Clean the surface with a non abrasive damp cloth and neutral soap. The surface should be dried after cleaning.

Clean the surface with a non abrasive cloth and a solution of 50% water and 50% alcohol.

Clean the surface with a non abrasive cloth and a specific cleaning product for metallic surfaces.

Limescale marks on Chrome may be removed by using a 30% vinegar and water solution or with specific cleaning products for chromed surfaces. Dry thoroughly with a dry non abrasive cloth when you have finished cleaning.

Strong, acidic or alkaline cleaners can damage painted metallic surfaces. It is very important to prevent this.

## **CASTERS**

With the use, dust and debris may accumulate on your chair casters leading to premature loss of mobility and performance. A regular cleaning and maintenance are needed to prolong the right function of your chair casters.

## **PLASTICS**

Plastic surfaces can be cleaned with a non-abrasive cloth, warm water and neutral soap. Alternatively, you may use a solution of 50% water and 50% alcohol or specific cleaning products for plastic surfaces.

## **MARBLE**

Marble is a porous natural material, so it can be prone to staining and etching. With marble prevention and maintenance is very important.

For routine maintenance and cleaning you can wipe with a non-abrasive cloth, warm water and soap. Keep acids like lemon juice, vinegar or wine away from the surface. If they do spill, remove them as quickly as possible. Some stains, can be removed with a solution of 12% hydrogen peroxide and a few drops of ammonia.

For more information on the maintenance of these and other materials, please contact our Customer Service.

## **DISINFECTION**

Due to the COVID 19 pandemic, many people wonder how to properly clean their furniture to prevent and avoid the transmission of the virus without damaging its surface materials. In order to inform you, INCLASS has published a disinfection guide with useful tips to disinfect the different surfaces of your furniture. You can consult our disinfection guide in the following [Link](#).